

# 2020 Sequoia



# Your full-size adventures begin here.

As your family grows, so do your adventures. There are countless new places to explore, experiences to share and memories to create. That's where the 2020 Toyota Sequoia comes into play. With a spacious interior that can seat up to eight passengers and a powerful 5.7L V8 — everyone and everything can come along for the ride. And when it's time to take the fun beyond the campsite, Sequoia's proven off-road capabilities<sup>55</sup> and intelligent safety features will help get you there and back. So pack it in, hitch it up and get ready to make your next family outing one to remember.



2019 Sequoia is the Edmunds Best Retained Value® for large SUVs.



Limited shown in Shoreline Blue Pearl.  
See numbered footnotes in Disclosures section.

treadlightly!  
OFFICIAL PARTNER



INTERIOR



Platinum shown in Blizzard Pearl;<sup>54</sup> interior shown in Red Rock leather trim.

# Room for everyone and everything.

Inside Sequoia, everyone gets to ride first class. Available heated and ventilated front seats, and available leather-trimmed seating for all, help keep everyone riding in comfort and style. Even third-row passengers will feel special with the ease of getting into their seats. An available JBL<sup>®29</sup> Premium Audio system with Dynamic Navigation<sup>24</sup> is the ultimate copilot, giving you turn-by-turn directions and a ton of music choices. Hear your music like never before and let your rear-seat passengers catch up on their favorite movies with the available rear-seat Blu-ray Disc<sup>™</sup> player.<sup>36</sup>



## REAR-SEAT BLU-RAY DISC<sup>™</sup> PLAYER

Sequoia will have your rear passengers hoping they're not there yet. That's because they can watch the latest movies or play video games on the available rear-seat Blu-ray Disc<sup>™</sup> player with 9-in. display. Plus, all their movies and games will stow neatly away in Sequoia's many storage compartments.



## HEATED AND VENTILATED FRONT SEATS AND TRI-ZONE CLIMATE CONTROLS

Standard heated and ventilated front seats found inside Sequoia Platinum give driver and front passenger more comfort and the option to warm up or cool down with a touch of a button. Both front and rear passengers can dial in the comfort even more thanks to three-zone automatic climate control. Select the temperature you want and get ready to enjoy the ride.



## STANDARD MOONROOF

Let more of the outside in with Sequoia's one-touch tilt/slide power moonroof with sliding sunshade. Pull the sunshade back to brighten up the interior, tilt it up for some fresh air, or open it up to admire the view above. It's the little things that make the adventure more fun.

SEQUOIA TRD PRO

**TRD PRO**



## Let everyone in on the action. The 2020 Sequoia TRD Pro.

The all-new 2020 Sequoia TRD Pro adds more off-road capabilities<sup>55</sup> than ever before while still delivering a comfortable drive for every day. Whether it's taking on the harshest deserts, exploring the deepest jungles or simply running your favorite local trail, Sequoia TRD Pro is ready to perform when roads are far and few between. Engineered by the team at Toyota Racing Development, Sequoia TRD Pro is equipped to push the limits. Standard features include lightweight 18-in. forged aluminum BBS<sup>®52</sup> wheels, TRD-tuned FOX<sup>®3</sup> shocks with piggyback reservoirs, a 1/4-inch-thick aluminum skid plate and a heritage-inspired front grille. It's one tough rig that will take you to places you never thought possible.

**TRD Pro** shown in Super White. Off-roading is inherently dangerous. Abusive use may result in bodily harm or vehicle damage. Wear seatbelts at all times and do not allow passengers in cargo area.<sup>55</sup>

See numbered footnotes in Disclosures section.

SEQUOIA TRD PRO



#### TRD EXHAUST

Sequoia TRD Pro is available with a TRD black cat-back exhaust. And more than just an aggressive exhaust note and stealthy look, TRD engineers have designed it with a frequency-tuned sound cancellation device to improve the sound quality inside.



#### TRD-TUNED FOX<sup>®</sup> SUSPENSION

Made specifically for off-roading,<sup>55</sup> Sequoia TRD Pro's FOX<sup>®</sup> shocks give you the ability to handle almost any terrain. The front 2.5-in. internal bypass shocks include seven compression zones and two rebound zones while the rear uses a 2-in. shock setup. With an additional 18 mm of rebound travel, get ready to go beyond the horizon.

#### TRD SKID PLATE

To help protect what's underneath from all your treks off pavement, Sequoia TRD Pro is outfitted with a 1/4-in.-thick aluminum skid plate. Stamped with a red TRD logo, it's ready to go to work while adding rugged style wherever you go.



#### RIGID INDUSTRIES<sup>®</sup> LED FOG LIGHTS

Rigid Industries<sup>®</sup> LED fog lights project long-range high-intensity light while drawing very little power. Their compact design is made to fit perfectly inside the front bumper and designed to help reveal more of whatever comes your way.



#### TRD PRO WHEELS

Black forged aluminum 18-in. BBS<sup>®52</sup> wheels with matching black lugs wrapped in all-terrain rubber give Sequoia TRD Pro more than a tougher look; their reduced unsprung mass improves overall performance and ride quality.



Always wear your seat belt. For more information, visit us at [www.ford.com](http://www.ford.com). ©2014 Ford Motor Company. All rights reserved. Ford, the Ford logo, and Ford Truck are trademarks of Ford Motor Company.

# Tuned to turn heads.

At Toyota Racing Development (TRD), our minds are always racing. We've been helping enthusiasts extract more performance from their Toyotas since 1979, and we have no intention of slowing down. We've taken the lessons learned from the racetrack and applied them to our sportiest full-size SUV: the 2020 Sequoia TRD Sport. TRD-tuned springs, Bilstein<sup>®2</sup> shocks and tuned sway bars deliver on-road performance. And with its LED headlights, gloss-black grille with chrome surround and 20-in. TRD Sport black alloy wheels, this truck looks more than the part. It's all the cool stuff you want — and more — so you can haul more than just family.



TRD Sport shown in Magnetic Gray Metallic.

See numbered footnotes in Disclosures section.

SEQUOIA TRD SPORT



#### **TRD-TUNED SPORT SUSPENSION**

Sequoia TRD Sport's unique suspension includes TRD front and rear sway bars and Bilstein® shocks. Tuned by the engineers at Toyota Racing Development, these components work together to give this SUV flatter cornering and a smoother ride.

#### **BLACK TRD SPORT BADGING**

Matching Sequoia TRD Sport's sleek black exterior accents is black TRD Sport badging. Not only does it signal that this is no ordinary SUV, it completes the look as it turns heads on the streets.



TRD Sport shown in Magnetic Gray Metallic.  
See numbered footnotes in Disclosures section.

# When your family adventures require more.

The best family moments aren't created on a handheld device, they're out there waiting for you in the outdoors. So when it's time to get back to nature, Sequoia's got the strength you need to get the family — and their stuff — well beyond city limits. With its fully boxed frame, 381-hp 5.7L V8 and TOW/HAUL transmission mode, this SUV can tow up to 7400 lb.<sup>6</sup> An automatic 6-speed ECT-i transmission features uphill and downhill shift logic, making it easier to take on those steeper grades too. The only thing you need now for your next family adventure is a little imagination.



Limited shown in Shoreline Blue Pearl.

Never tow beyond a vehicle's towing capacities. See *Owner's Manual* for additional limitations and details.<sup>6</sup> Do not overload your vehicle. Always properly secure cargo and cargo area. See *Owner's Manual* for weight limits and distribution.<sup>6</sup> See numbered footnotes in Disclosures section.

**AUTOMATIC LIMITED-SLIP DIFFERENTIAL (AUTO LSD)<sup>56</sup>**

Sequoia's advanced Automatic Limited-Slip Differential (Auto LSD) uses the brakes to help reduce individual wheelspin, giving you enhanced traction performance on unpredictable road surfaces like sand or mud.



Platinum shown in Blizzard Pearl.<sup>54</sup>

See numbered footnotes in Disclosures section.

**ADAPTIVE VARIABLE SUSPENSION**

Maintaining ride height is important when the vehicle is carrying many passengers or a lot of cargo weight. That's why Platinum features rear pneumatic cylinder height-controlled suspension — allowing you to adjust ride height to compensate for changes in load. And Platinum's electronically controlled Adaptive Variable Suspension (AVS) system offers driver-selectable settings that adapt to your needs.

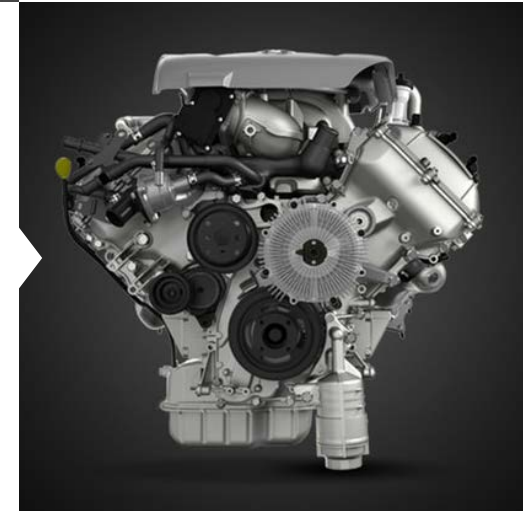


**MULTI-MODE 4WD**

This available system can turn mountains into molehills. Just turn the shift dial to engage the 4WD mode and let the Torsen<sup>®1</sup> limited-slip center differential go to work. The differential locks up to help get maximum traction on slippery or uneven surfaces.

**POWERFUL V8 ENGINE**

Sequoia comes standard with an all-aluminum 5.7L V8 that puts out 381 hp and 401 lb.-ft. of torque. Plus, this powerplant has received an Ultra Low Emission Vehicle III (ULEV-70) rating, because with power comes eco-sensitivity.





#### FRONT AND REAR SUSPENSION

Sequoia's independent double-wishbone front and rear suspension gives you the best of both worlds: responsive handling on pavement and a smoother ride off road.<sup>55</sup> This sophisticated suspension utilizes low-pressure gas-filled shock absorbers and hollow stabilizer bars.

Platinum shown in Blizzard Pearl.<sup>54</sup>

See numbered footnotes in Disclosures section.

TECHNOLOGY



Platinum interior shown in Red Rock. Prototype shown with options. Apple CarPlay<sup>®15</sup> screen shown.

# “Roughing it” made easy.

Everyone knows it’s about the journey and not just the destination. That’s why Sequoia is filled with convenient features to make it easy for you to take it all in. From the personalized comfort of an available 10-way power-adjustable driver’s seat to a customizable 4.2-in. Multi-Information Display (MID) that puts Sequoia’s vitals front and center, it’s easy to enjoy the ride. And allowing you to interact with all of Sequoia’s functions is a 7-in. touch-screen display. You can personalize the drive even further by connecting your compatible iPhone<sup>58</sup> to access your favorite apps through Apple CarPlay<sup>®15</sup> or using Android Auto<sup>™14</sup> to help keep you connected to your world.



## SMART KEY SYSTEM<sup>39</sup> WITH PUSH BUTTON START

No need to reach into your pocket or purse with Sequoia’s Smart Key System. When Sequoia senses you are near, you can unlock the doors by grabbing the handles on the front doors or liftgate. Once inside, push the brake pedal, press the Push Button Start and you’re ready to go.



## APPLE CARPLAY<sup>®</sup> COMPATIBILITY

Bring along a familiar face. Now with Apple CarPlay<sup>®</sup> compatibility, you can use your compatible iPhone<sup>®</sup> with Sequoia’s audio multimedia system to get directions, make calls, send and receive messages, and listen to music, while staying focused on your commute. Screen depiction accurate as of summer 2019.<sup>29</sup>



## PREMIUM JBL<sup>®29</sup> AUDIO SYSTEM WITH DYNAMIC NAVIGATION<sup>24</sup>

The available JBL<sup>®</sup> w/Clari-Fi<sup>®29</sup> sound system with 14 custom-engineered speakers including subwoofer and amplifier, plus a media USB port,<sup>11</sup> two 2.1A USB ports,<sup>11</sup> and hands-free<sup>69</sup> phone capability with Bluetooth<sup>®13</sup> wireless streaming, make you feel like you are in the front row for every performance.

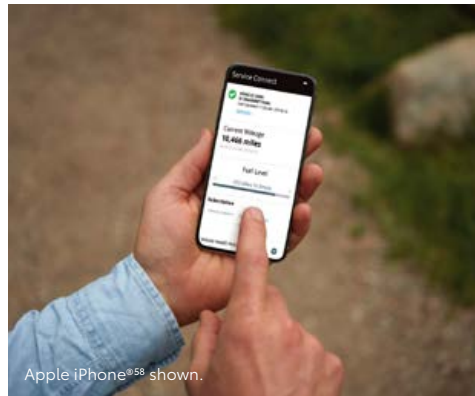


## ANDROID AUTO<sup>™</sup>

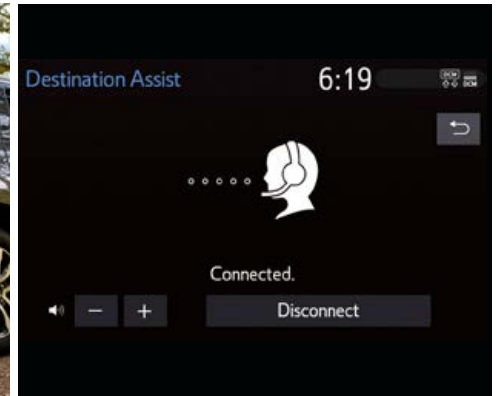
Android Auto<sup>™</sup> puts many of your favorite Android<sup>™</sup> apps right on Sequoia’s 7.0-in. touch-screen. You can take calls, pull up your favorite playlist and a whole lot more — all while your Android phone is safely stashed away.<sup>29</sup>

# Technology that keeps up with you.

Out of sight, but never out of mind. Stay in touch with the world while inside Sequoia and even when you're away, you can stay connected with available Connected Services.<sup>25</sup> Remotely monitor guest drivers, control interior temps, locate your Sequoia in a crowded lot and more. Discover a convenience and sense of security with a connection designed to help make driving safe.



Apple iPhone<sup>®58</sup> shown.



## REMOTE CONNECT<sup>22</sup>

Toyota's Remote Connect feature allows you to access select vehicle capabilities from your smart device.<sup>67</sup> Locking and unlocking doors, starting and stopping engine, finding and monitoring vehicle status are all possible through the Toyota app. One-year trial included.<sup>23</sup>

## SERVICE CONNECT<sup>20</sup>

Stay up-to-date with your Sequoia's information. Vehicle health reports provide data such as mileage, fuel level and service history. Enable maintenance alerts and receive maintenance reminders that can also be sent to your preferred dealer for extra convenience. Ten-year trial included.<sup>21</sup>

## WI-FI CONNECT<sup>68</sup>

When you enable Wi-Fi Connect services you can turn your Sequoia into a hotspot with 4G connectivity. This feature allows up to five devices to stay connected to favorite apps for work or play while conserving battery power and data for every device. Three-month trial included.<sup>53</sup>

## AVAILABLE DESTINATION ASSIST<sup>27</sup>

Take the stress out of being in unfamiliar territory. Destination Assist connects you with a live agent to help you locate places to go and things to do. One-year trial included.<sup>28</sup>



Limited shown in Shoreline Blue Pearl.

Cargo and load capacity limited by weight and distribution. Always properly secure cargo and cargo area.<sup>5</sup> See numbered footnotes in Disclosures section.

**SAFETY CONNECT<sup>®18</sup>**

When the unexpected occurs, Safety Connect<sup>®</sup> is ready to help. Drivers can be connected to our 24/7 response center at the touch of a button. In case of an accident or emergency, an agent can notify local emergency services to request dispatch to the vehicle's location. You also get 24/7 Roadside Assistance<sup>59</sup> and Stolen Vehicle locator,<sup>32</sup> to give you peace of mind that help is on the way so you can be on yours. One-year trial included.<sup>19</sup>

# Space that's ready for whatever you've got.

---

Because there's no such thing as a one-size-fits-all adventure, Sequoia makes it easy to carry gear, family or both. The sliding second-row and third-row seats fold flat, making it easy to load and unload the equipment your weekend road trip requires. And the split-fold seat design lets you choose how to store those bigger items: upright or flat. Of course, with its spacious interior, available reclining third-row seat<sup>38</sup> and available second-row console, Sequoia is as accommodating to passengers as it is to cargo.<sup>5</sup> So what are you waiting for?



## POWER RECLINING AND FOLD-FLAT THIRD-ROW SEAT<sup>38</sup>

When it comes to comfort, the available power reclining and fold-flat third-row seat will make settling in for the long haul as easy as pushing a button.<sup>5</sup>



## FRONT-SEAT CONSOLE

The front-seat console on Platinum offers climate control and cup holders for those in the second row. There are also RCA jacks for the rear-seat Blu-ray Disc™ player,<sup>36</sup> three 12V auxiliary power outlets<sup>70</sup> and a handy 120V AC power outlet.<sup>64</sup>



## AUTOMATIC POWER LIFTGATE<sup>42</sup>

Sequoia's available power liftgate helps you get ready to go. Just press a button inside the cargo area, or on the dash or use the key fob, and it will open or close automatically.

POWERFUL FLEXIBILITY



Platinum interior shown in Red Rock.  
See numbered footnotes in Disclosures section.

#### REAR CARGO 12V POWER OUTLET

Power your gear. All you have to do is access the rear cargo area and plug into Sequoia's standard 12V outlet<sup>70</sup> for that extra touch of convenience wherever you go.<sup>5</sup>



#### PLENTY OF ROOM

Sequoia's big cabin offers much more than just space. There's comfortable seating for up to eight with the standard third row, and a variety of seating configurations, to handle any combination of passengers and payload. Or fold all the seats flat and reveal 120 cubic feet of cargo capacity<sup>5</sup> — perfect for that drum kit, those home improvement materials or that eight-person tent.

#### SECOND-ROW CAPTAIN'S CHAIRS

Sequoia offers premium second-row captain's chairs for comfort that's in a class of its own. Platinum takes it up a notch by giving your passengers the first-class treatment with the addition of heated seats and multi-function center console.



SAFETY



Platinum shown in Blizzard Pearl.<sup>54</sup>

Never tow beyond a vehicle's published towing capacities. See *Owner's Manual* for additional limitations and details.<sup>6</sup> See numbered footnotes in Disclosures section.

# You planned your trip. We planned your return.

With Sequoia, one thing you'll never leave behind is peace of mind. Sequoia is equipped with an array of active safety features designed to help you avoid trouble and passive safety features designed to help protect you if trouble proves unavoidable — such as Dynamic Radar Cruise Control (DRCC),<sup>35</sup> which automatically adjusts vehicle speed to help maintain a preset distance between you and the vehicle in front of you. We go to these lengths because, as with any excursion, there's no substitute for preparation.



## BACKUP CAMERA<sup>60</sup>

Get a better view. When you shift into Reverse, Sequoia's standard integrated backup camera automatically enables the touch-screen display to help you see what's behind you.<sup>29</sup>



## STANDARD BLIND SPOT MONITOR<sup>44</sup> WITH REAR CROSS-TRAFFIC ALERT<sup>45</sup>

Sequoia's standard Blind Spot Monitor (BSM) with Rear Cross-Traffic Alert (RCTA) are designed to help you identify vehicles that might be in a blind spot. When you use your turn signal and BSM detects a vehicle, it warns you with a flashing indicator light on the appropriate outside mirror. The Rear Cross-Traffic Alert provides audible and visual indicators are designed to help warn you of approaching vehicles when you're slowly backing out of a driveway or parking spot.



## ADVANCED AIRBAG SYSTEM<sup>48</sup>

Not all collisions call for maximum airbag deployment. In certain types of frontal collisions, the standard driver and front passenger Advanced Airbag System is designed to sense impact severity and adjust airbag deployment accordingly.



## STAR SAFETY SYSTEM<sup>TM</sup>

Sequoia comes standard with the Star Safety System,<sup>TM</sup> a suite of six advanced safety features designed to help keep drivers out of harm's way. The system includes Vehicle Stability Control (VSC),<sup>46</sup> Traction Control (TRAC), Anti-lock Brake System (ABS), Electronic Brake-force Distribution (EBD), Brake Assist (BA)<sup>4</sup> and Smart Stop Technology<sup>®</sup> (SST).<sup>47</sup>

Toyota  
Safety  
Sense™

# Designed for safety.

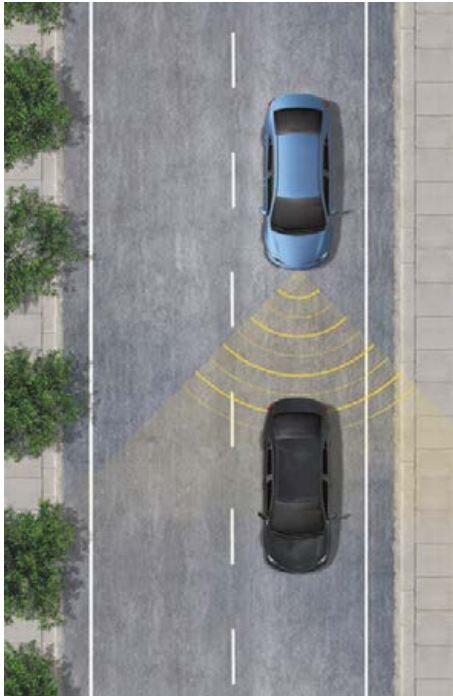
---

Toyota Safety Sense™ P (TSS-P)<sup>34</sup> is a bundle of active safety features that comes standard on every new Toyota Sequoia. These innovative features were designed to help protect you and your passengers from harm.



**TRD Sport** shown in Magnetic Gray Metallic.

See numbered footnotes in Disclosures section.



**DYNAMIC RADAR CRUISE CONTROL<sup>35</sup>**

Intended for highway use and similar to “constant speed” cruise control, Dynamic Radar Cruise Control (DRCC) lets you drive at a preset speed. DRCC uses vehicle-to-vehicle distance control, which adjusts your speed, to help you maintain a preset distance from vehicles ahead of you that are driving at a slower speed. If a driver is traveling slower than you, or within your preset range, DRCC will automatically slow your vehicle down without deactivating cruise control. If DRCC determines you need to slow down more, an audio and visual alert notifies you and brakes are applied.



**LANE DEPARTURE ALERT<sup>31</sup>**

Under certain circumstances, Lane Departure Alert (LDA) is designed to help detect lane departure on roads with visible lane markings. LDA only activates when you’re traveling at a speed of 32 mph or faster. When you hear and see the alert, after carefully checking the road around you, safely direct your vehicle back to the center of your lane.



**AUTOMATIC HIGH BEAMS<sup>43</sup>**

The Automatic High Beams (AHB) feature is a safety system designed to help you see more clearly at night — without distracting other drivers. Designed to activate at speeds above 25 mph, AHB relies on an in-vehicle camera to help detect the headlights of oncoming vehicles and taillights of preceding vehicles, then automatically toggles between high and low beams accordingly to provide the appropriate amount of light. By using high beams more frequently, the system may allow for earlier detection of pedestrians and obstacles.



**PRE-COLLISION SYSTEM WITH PEDESTRIAN DETECTION<sup>30</sup>**

Pre-Collision System with Pedestrian Detection (PCS w/PD) is designed to help keep the road safe by detecting a vehicle or a pedestrian in certain situations. By combining millimeter-wave radar with a camera capable of detecting certain shape recognition, the system provides an audio/visual alert, warning you of a possible collision under certain circumstances. If you don’t react, the system is designed for automatic braking support to help mitigate the potential for a collision.



## SR5

### Exterior

- LED high- and low-beam headlights with auto-off feature
- Integrated LED fog lights
- Color-keyed heated power outside mirrors
- 18-in. alloy wheels
- Power tilt/slide moonroof with sliding sunshade

### Interior

- Automatic three-zone front and rear climate control with air filter
- Optitron instrumentation with speedometer and tachometer; LCD display with odometer and tripmeters
- Easy-clean fabric-trimmed front seats; 8-way power-adjustable driver's seat; 4-way adjustable front passenger seat
- Easy-clean fabric-trimmed 40/20/40 split, reclining, fold-flat second-row seat with one-touch access to third-row seat
- Multi-function center console with two front and two rear cup holders, four 12V auxiliary power outlets, sliding covered armrest and storage compartment

### Safety/Convenience

- Toyota Safety Sense™ P (TSS-P)<sup>34</sup> — includes Pre-Collision System with Pedestrian Detection (PCS w/PD)<sup>30</sup> Lane Departure Alert (LDA)<sup>31</sup> Automatic High Beams (AHB)<sup>43</sup> and Dynamic Radar Cruise Control (DRCC)<sup>35</sup>
- Blind Spot Monitor (BSM)<sup>44</sup> with Rear Cross-Traffic Alert (RCTA)<sup>45</sup>
- Star Safety System™

### Options

- Premium Package — includes 8-passenger leather-trimmed seats, heated 10-way power-adjustable driver's seat and 6-way power-adjustable front passenger seat, power reclining<sup>38</sup> and fold-flat third-row seating, Premium Audio with Dynamic Navigation<sup>24</sup> Dynamic Navigation<sup>24</sup> with up to 3-year trial,<sup>26</sup> auto-dimming rearview mirror with compass and HomeLink<sup>®40</sup> universal transceiver



## TRD Sport

Adds to or replaces features on SR5

### Exterior

- Satin-black TRD Sport front door logos
- Gloss-black heated power outside mirrors
- 20-in. TRD Sport black alloy wheels
- TRD Sport performance-tuned Bilstein<sup>®2</sup> shocks
- TRD Sport performance-tuned sway bars

### Interior

- 7-passenger seating with easy-clean fabric-trimmed front seats and second-row captain's chairs; 8-way power-adjustable driver's seat; 4-way adjustable front passenger seat

### Options

- TRD Sport Premium Package — includes 7-passenger black leather-trimmed seats with contrast stitching, heated 10-way power-adjustable driver's seat and 6-way power-adjustable front passenger seat, power reclining<sup>38</sup> and fold-flat third-row seating, Premium Audio with Dynamic Navigation<sup>24</sup> Dynamic Navigation<sup>24</sup> with up to 3-year trial,<sup>26</sup> auto-dimming rearview mirror with compass and HomeLink<sup>®40</sup> universal transceiver



## Limited

Adds to or replaces features on SR5

### Exterior

- Chrome auto-dimming heated power outside mirrors with power folding feature and turn signal indicators
- Power liftgate<sup>42</sup> with jam protection
- 20-in. alloy wheels

### Interior

- Premium Audio with Dynamic Navigation<sup>24</sup> and 7-in. touch-screen display
- Leather-trimmed and heated front seats; 10-way power-adjustable driver's seat; 6-way power-adjustable front passenger seat
- Leather-trimmed 40/20/40 split, sliding, reclining<sup>38</sup> fold-flat second-row seat with one-touch access to third-row seat
- Leather-trimmed tilt/telescopic steering wheel with audio, voice-command, Bluetooth<sup>®13</sup> hands-free phone controls, Multi-Information Display (MID), Dynamic Radar Cruise Control (DRCC)<sup>35</sup> and Lane Departure Alert (LDA)<sup>31</sup> controls
- Auto-dimming rearview mirror with compass and HomeLink<sup>®40</sup> universal transceiver

### Options

- Rear-seat Blu-ray Disc™<sup>36</sup> player with 9-in. display, two wireless headphones,<sup>37</sup> wireless remote and rear audio system with 120V AC power outlet<sup>64</sup> and RCA jacks
- Premium JBL<sup>®29</sup> Audio and Convenience Package — includes Premium Audio with Dynamic Navigation<sup>24</sup> and JBL<sup>®</sup> w/Clari-Fi<sup>®29</sup> — 14 speakers, including subwoofer and amplifier, two-position power memory driver's seat and memory outside mirrors
- 7-passenger seating with leather trim and second-row captain's chairs



## Platinum

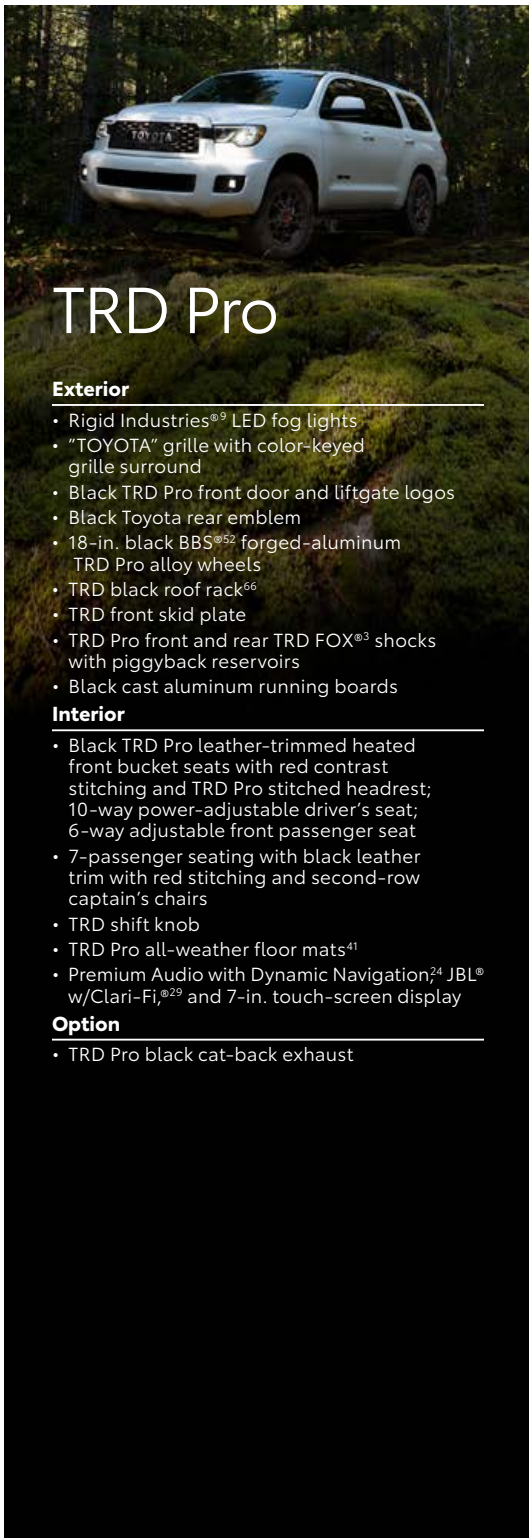
Adds to or replaces features on Limited

### Exterior

- Chrome auto-dimming heated power outside mirrors with power-folding, reverse tilt-down and memory features, turn signal indicators and puddle lights
- 20-in. diamond-cut-finish alloy wheels

### Interior

- Premium Audio with Dynamic Navigation<sup>24</sup> JBL<sup>®</sup> w/Clari-Fi<sup>®29</sup> and 7.0-in. touch-screen display
- Rear-seat Blu-ray Disc™<sup>36</sup> player with 9-in. display, two wireless headphones,<sup>37</sup> wireless remote and rear audio system with 120V AC power outlet<sup>64</sup> and RCA jacks
- Perforated leather-trimmed heated and ventilated front seats; 10-way power-adjustable driver's seat with power thigh and lumbar support; 6-way power-adjustable front passenger seat
- 7-passenger seating with perforated leather-trimmed and heated second-row captain's chairs and multi-function center console
- Perforated leather-trimmed 60/40 split, power reclining<sup>38</sup> fold-flat third-row seat with folding headrests



# TRD Pro

## Exterior

- Rigid Industries<sup>99</sup> LED fog lights
- "TOYOTA" grille with color-keyed grille surround
- Black TRD Pro front door and liftgate logos
- Black Toyota rear emblem
- 18-in. black BBS<sup>52</sup> forged-aluminum TRD Pro alloy wheels
- TRD black roof rack<sup>66</sup>
- TRD front skid plate
- TRD Pro front and rear TRD FOX<sup>93</sup> shocks with piggyback reservoirs
- Black cast aluminum running boards

## Interior

- Black TRD Pro leather-trimmed heated front bucket seats with red contrast stitching and TRD Pro stitched headrest; 10-way power-adjustable driver's seat; 6-way adjustable front passenger seat
- 7-passenger seating with black leather trim with red stitching and second-row captain's chairs
- TRD shift knob
- TRD Pro all-weather floor mats<sup>41</sup>
- Premium Audio with Dynamic Navigation<sup>24</sup> JBL<sup>®</sup> w/Clari-Fi<sup>29</sup> and 7-in. touch-screen display

## Option

- TRD Pro black cat-back exhaust

COLOR/TRIM\*

## Color



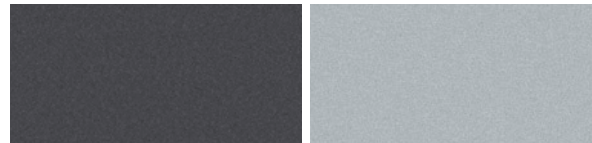
Midnight Black Metallic

Shoreline Blue Pearl



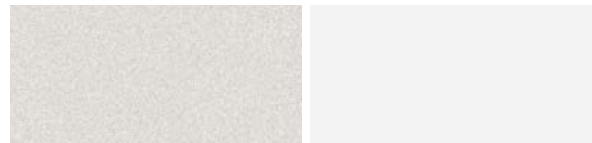
Army Green

Sizzling Crimson Mica



Magnetic Gray Metallic

Celestial Silver Metallic

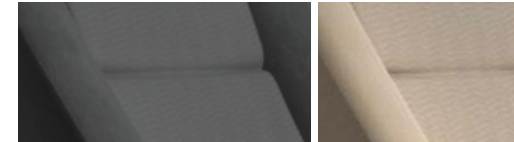


Blizzard Pearl<sup>54</sup>

Super White

## Trim

Also available in:



SR5 easy-clean fabric in Graphite

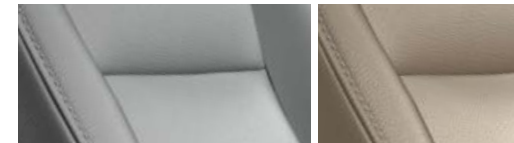
Sand Beige



TRD Sport in Black

TRD Pro leather trim in Black

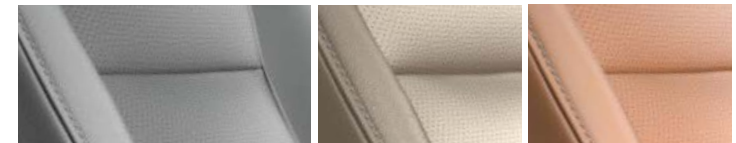
Also available in:



Limited leather trim in Graphite

Sand Beige

Also available in:



Platinum perforated leather trim in Graphite

Sand Beige

Red Rock

## Wheels



SR5 18-in. alloy wheel



TRD Sport 20-in. black alloy wheel



Limited 20-in. alloy wheel



Platinum 20-in. diamond-cut-finish alloy wheel



TRD Pro 18-in. black BBS<sup>52</sup> alloy wheel

\*Not all colors and trims available on all model grades. See dealer for details. See numbered footnotes in Disclosures section.

ACCESSORIES

Because no two families are alike. A wide range of Genuine Toyota Accessories are available to help you make your Sequoia your own. Considering how appealing Sequoia is to begin with, these quality products will be like icing on the cake. Some accessories may not be available in all regions of the country. See your Toyota dealer for details.

Alloy wheel locks  
All-weather cargo mat<sup>5</sup>  
All-weather floor liners<sup>41</sup>  
Ball mount  
Black emblem overlay for rear badge  
Black wheel locks and lug nuts  
Cargo cover<sup>5</sup>  
Cargo net — envelope<sup>5</sup>

Cargo tote<sup>5</sup>  
Carpet cargo mat<sup>5</sup>  
Carpet floor mats<sup>41</sup>  
Coin holder/ashtray cup  
Doorsill protectors  
Emergency assistance kit  
First aid kit  
Front skid plate

Glass Breakage Sensor (GBS)<sup>61</sup>  
Hood protector  
Paint protection film<sup>62</sup>  
Trailer ball and ball mount<sup>6</sup>  
TRD 18-in. forged matte-black alloy wheels  
TRD cast aluminum running boards  
TRD front and rear sway bars  
TRD front skid plate

TRD performance air filter  
TRD performance brake pads  
TRD performance oil cap  
TRD performance oil filter  
TRD radiator cap  
Universal tablet holder<sup>63</sup>  
Wireless headphones<sup>37</sup>



All-weather cargo mat<sup>5</sup>



All-weather floor liners<sup>41</sup>



TRD cast aluminum running boards



Cargo cover<sup>5</sup>



Black emblem overlay for rear badge



TRD 18-in. forged matte-black alloy wheel



TRD front skid plate



Paint protection film<sup>62</sup>

SPECIFICATIONS

MECHANICAL AND PERFORMANCE	SR5	TRD SPORT	LIMITED	PLATINUM	TRD PRO
<b>Engine</b>					
5.7-Liter i-FORCE V8 DOHC 32-Valve with Dual Independent Variable Valve Timing with intelligence (VVT-i); 381 hp @ 5600 rpm; 401 lb.-ft. @ 3600 rpm	Standard	Standard	Standard	Standard	Standard
<b>EMISSION RATING</b>					
California Air Resources Board (CARB) Emission Standard; Low Emission Vehicle (LEV) III, Ultra Low Emission Vehicle (ULEV) 70	Standard	Standard	Standard	Standard	Standard
Federal Environmental Protection Agency (EPA) Emission Standard: Bin 70	Standard	Standard	Standard	Standard	Standard
<b>TRANSMISSION</b>					
6-speed Electronically Controlled automatic Transmission with intelligence (ECT-i); sequential shift mode and uphill/downhill shift logic; TOW/HAUL Mode	Standard	Standard	Standard	Standard	Standard
<b>DRIVETRAIN</b>					
Rear-Wheel Drive (RWD)	Standard	Standard	Standard	Standard	NA
Multi-Mode 4WD with Torsen®1 limited-slip center differential with locking feature (4x4 only)	Available	Available	Available	Available	Standard
<b>BODY CONSTRUCTION</b>					
Reinforced body-on-frame construction	Standard	Standard	Standard	Standard	Standard
<b>SUSPENSION</b>					
Front high-mounted coil-spring independent double-wishbone front suspension with low-pressure gas-filled shock absorbers and hollow stabilizer bar; rear coil-spring independent double-wishbone suspension with low-pressure gas-filled shock absorbers and hollow stabilizer bar	Standard	NA	Standard	NA	NA
Front high-mounted coil-spring independent double-wishbone front suspension with TRD Sport performance-tuned Bilstein®2 shock absorbers, and TRD Sport performance-tuned sway bar; rear coil-spring independent double-wishbone suspension with TRD Sport performance-tuned Bilstein®2 shock absorbers, and TRD Sport performance-tuned sway bar	NA	Standard	NA	NA	NA
Front high-mounted coil-spring independent double-wishbone front suspension with low-pressure gas-filled electronically actuated shock absorbers and hollow stabilizer bar; rear pneumatic cylinder height-controlled independent double-wishbone suspension with low-pressure gas-filled electronically actuated shock absorbers and hollow stabilizer bar	NA	NA	NA	Standard	NA
Electronic Modulated Rear Air Suspension	NA	NA	NA	Standard	NA
Adaptive Variable Suspension (AVS) system (which controls the damping force of the shock absorbers for all four wheels in accordance with driving and road surface conditions)	NA	NA	NA	Standard	NA
TRD Pro front and rear coil-spring independent double wishbone suspension with TRD FOX®3 shocks with piggyback reservoirs	NA	NA	NA	NA	Standard
<b>STEERING</b>					
Engine speed-sensing Variable Flow Control (VFC) power-assisted rack-and-pinion	Standard	Standard	Standard	Standard	Standard
Turning circle diameter, curb to curb (ft.)	38.1	38.1	38.1	38.1	38.1
<b>BRAKES</b>					
Power-assisted 4-wheel Anti-lock Brake System (ABS) with Electronic Brake-force Distribution (EBD) and Brake Assist (BA)4	Standard	Standard	Standard	Standard	Standard
<b>WHEELS</b>					
18-inch x 8-inch aluminum alloy	Standard	NA	NA	NA	NA
20-inch x 8-inch aluminum alloy	NA	Standard	Standard	Standard	NA
TRD 18-inch x 8-inch forged aluminum alloy	NA	NA	NA	NA	Standard
<b>EXTERIOR DIMENSIONS (in.)</b>					
Overall width/height/length	79.9/77.0/205.1	79.9/77.0/205.1	79.9/77.0/205.1	79.9/77.0/205.1	79.9/77.0/205.1
Wheelbase	122.0	122.0	122.0	122.0	122.0
Track (front/rear)	67.9/69.1	67.9/69.1	67.9/69.1	67.9/69.1	67.9/69.1
<b>INTERIOR DIMENSIONS (front/second-row/third-row seats) (in.)</b>					
Head room with moonroof	34.8/34.9/34.5	34.8/34.9/34.5	34.8/34.9/34.5	34.8/34.9/34.5	34.8/34.9/34.5
Shoulder room	66.4/65.6/65.7	66.4/65.6/65.7	66.4/65.6/65.7	66.4/65.6/65.7	66.4/65.6/65.7
Hip room	62.5/59.9/50.4	62.5/59.9/50.4	62.5/59.9/50.4	62.5/59.9/50.4	62.5/59.9/50.4
Leg room	42.5/40.9/35.3	42.5/40.9/35.3	42.5/40.9/35.3	42.5/40.9/35.3	42.5/40.9/35.3

See numbered footnotes in Disclosures section.

S = Standard    O = Optional    — = Not Available    P = Feature is available as part of an option package.

SPECIFICATIONS (continued)

<b>OFF-HIGHWAY</b>	<b>SR5</b>	<b>TRD SPORT</b>	<b>LIMITED</b>	<b>PLATINUM</b>	<b>TRD PRO</b>
Approach/departure angle (degrees) (4x2; 4x4)	27/20; 27/21	27/20; 27/21	27/20; 27/21	27/20; 27/21	27/21
Ground clearance (in.) (4x2/4x4)	9.9/10.0	9.9/10.0	9.9/10.0	9.6/9.6	10.0
<b>WEIGHTS AND CAPACITIES</b>					
Curb weight (lb.) (4x2/4x4)	5730/5985	5730/5985	5730/5985	5750/6000	5985
Gross Vehicle Weight Rating (GVWR) (lb.) (4x2/4x4)	7100/7300	7100/7300	7100/7300	7100/7300	7300
Gross Combined Weight Rating (GCWR) (lb.) (4x2/4x4)	13,600/13,600	13,600/13,600	13,600/13,500	13,400/13,500	13,600
Cargo volume <sup>5</sup> (cu. ft.) (behind front/second-row/third-row seats)	120.1/66.6/18.9	120.1/66.6/18.9	120.1/66.6/18.9	120.1/66.6/18.9	120.1/66.6/18.9
Seating capacity (standard/available)	8	7	8/7	7/NA	7/NA
Fuel tank (gal.)	26.4	26.4	26.4	26.4	26.4
<b>TOWING (SAE J2807 towing rating-compliant)<sup>6</sup></b>					
Towing hitch receiver and wiring harness with 4-/7-pin connector	Standard	Standard	Standard	Standard	Standard
Towing capacity (lb.) (4x2/4x4)	7400/7100	7400/7100	7400/7100	7200/7000	7100
<b>TIRES</b>					
Type – Mud-and-Snow-rated radials	Standard	Standard	Standard	Standard	Standard
Spare – Full-size, mounted under body	Standard	Standard	Standard	Standard	Standard
P275/65R18 114T	Standard	NA	NA	NA	NA
P275/55R20 111H	NA	Standard	Standard	Standard	NA
P275/65R18	NA	NA	NA	NA	Standard
<b>MILEAGE ESTIMATES (mpg city/highway/combined)<sup>7</sup> (4x2; 4x4)</b>					
	13/18/15; 13/17/14	13/18/15; 13/17/14	13/18/15; 13/17/14	13/18/15; 13/17/14	13/17/14

FEATURES<sup>8</sup>

<b>EXTERIOR</b>	<b>SR5</b>	<b>TRD SPORT</b>	<b>LIMITED</b>	<b>PLATINUM</b>	<b>TRD PRO</b>	<b>SR5</b>	<b>TRD SPORT</b>	<b>LIMITED</b>	<b>PLATINUM</b>	<b>TRD PRO</b>
LED low- and high-beam headlights with auto on/off feature	S	S	S	S	S	Power tilt/slide moonroof with sliding sunshade	S	S	S	S
LED Daytime Running Lights (DRL) with auto on/off feature	S	S	S	S	S	18-in. 5-spoke alloy wheels with P275/65R18 114T tires	S	—	—	—
Integrated LED fog lights with dark-silver surround	S	—	—	—	—	18-in. Black BBS <sup>®52</sup> forged-aluminum TRD Pro alloy wheels with P275/65R18 tires	—	—	—	S
Integrated LED fog lights with chrome surround	—	S	S	S	—	20-in. TRD Sport black alloy wheels with P275/55R20 111H tires	—	S	—	—
Rigid Industries <sup>®9</sup> LED fog lights	—	—	—	—	S	20-in. machined-finish split-spoke with dark-silver accent alloy wheels with P275/55R20 111H tires	—	—	S	—
Chrome grille surround with dark-silver insert and accent	S	—	S	—	—	20-in. machined-finish split-spoke with silver accent alloy wheels with P275/55R20 111H tires	—	—	—	S
Chrome grille surround with gloss-black insert and accent	—	S	—	—	—	Washer-linked variable intermittent windshield wipers and intermittent rear wiper	S	S	S	S
Chrome grille surround with chrome insert and accent	—	—	—	S	—	One-touch 3-blink turn signal indicators	S	S	S	S
“TOYOTA” grille with color-keyed grille surround	—	—	—	—	S	Windshield wiper de-icer	S	S	S	S
Lower bumper opening with dark-silver surround	S	—	—	—	S	Privacy glass on rear side, quarter and liftgate windows	S	S	S	S
Lower bumper opening with chrome surround	—	S	S	S	—	Power liftgate <sup>42</sup> with jam protection	—	—	S	S
Color-keyed heated power outside mirrors	S	—	—	—	—	Darkened rear taillight bezel	S	S	S	S
Color-keyed auto-dimming heated power outside mirrors with power folding feature and turn signal indicators	—	—	—	—	S	Chrome Sequoia logo raised on a black base with silver accent surround on liftgate	S	—	S	—
Gloss-black heated power outside mirrors	—	S	—	—	—	Black Sequoia logo raised on a black base with black accent surround on liftgate	—	S	—	—
Chrome auto-dimming heated power outside mirrors with turn signal indicators	—	—	S	—	—	Black Toyota front emblems	—	S	—	—
Chrome auto-dimming heated power outside mirrors with power folding, reverse tilt-down and memory features, turn signal indicators and puddle lights	—	—	—	S	—	Black Toyota rear emblem	—	S	—	S
Color-keyed door handles	S	S	—	—	S	Color-keyed rear spoiler with LED center high-mount stop light	S	S	S	S
Chrome door handles	—	—	S	S	—	Chrome body side molding	—	—	S	—
Black TRD Sport front door logos	—	S	—	—	—	Roof rack <sup>66</sup> – silver color	S	—	S	—
Black TRD Pro front door and liftgate logos	—	—	—	—	S	Roof rack <sup>66</sup> – black color	—	S	—	—

See numbered footnotes in Disclosures section.

S = Standard    O = Optional    — = Not Available    P = Feature is available as part of an option package.

FEATURES<sup>9</sup> (continued)

EXTERIOR (continued)	SR5	TRD SPORT	LIMITED	PLATINUM	TRD PRO		SR5	TRD SPORT	LIMITED	PLATINUM	TRD PRO
TRD black roof rack <sup>66</sup>	—	—	—	—	S	Adaptive Variable Suspension (AVS)	—	—	—	S	—
Running boards – black	S	S	—	—	—	Electronically Modulated Rear Air Suspension	—	—	—	S	—
Running boards – black with color-keyed surround	—	—	S	S	—	TRD Sport performance-tuned Bilstein <sup>®2</sup> front and rear shock absorbers	—	S	—	—	—
Running boards – black cast aluminum	—	—	—	—	S	TRD Sport performance-tuned front and rear sway bars	—	S	—	—	—
Engine and transfer case skid plates (transfer case 4x4 only)	S	S	S	S	—	TRD Pro front and rear TRD FOX <sup>®3</sup> shocks with piggyback reservoirs	—	—	—	—	S
TRD front skid plate	—	—	—	—	S						
<b>INTERIOR</b>											
Automatic three-zone front and rear climate control with air filter	S	S	S	S	S	Optitron instrumentation with white backlit speedometer, tachometer, voltmeter, coolant temperature, fuel level, engine oil pressure gauges; 4.2-in. TFT Multi-Information Display with customizable settings, shift-position indicator, odometer, dual tripmeters, outside temperature, current/average fuel economy, distance to empty, average speed, trip distance and timer, PCS; <sup>30</sup> LDA <sup>31</sup> and Sway Warning, time until rest; compass; radio station; TPMS <sup>33</sup> with individual tire pressure read-out and alert location, TSS-P <sup>34</sup> information with Lane Departure Alert (LDA) graphic, on/off and digital Dynamic Radar Cruise Control (DRCC) <sup>35</sup> on/off; LDA sensitivity and Sway Warning System (SWS) on/off and sensitivity adjustment, Pre-Collision System (PCS) on/off and sensitivity adjustment, fuel low and other warning messages	S	S	S	S	S
Audio Plus — includes eight speakers, 7-in. touch-screen, HD Radio <sup>™10</sup> USB media port, <sup>11</sup> two USB charge ports, <sup>11</sup> advanced voice recognition, <sup>12</sup> hands-free phone capability and music streaming <sup>13</sup> via Bluetooth <sup>®13</sup> wireless technology, Android Auto <sup>™14</sup> & Apple CarPlay <sup>®15</sup> compatible, HD Radio <sup>™10</sup> SiriusXM <sup>®16</sup> with 3-month All Access trial, <sup>17</sup> Safety Connect <sup>®18</sup> with 1-year trial, <sup>19</sup> Service Connect <sup>20</sup> with 10-year trial, <sup>21</sup> Remote Connect <sup>22</sup> with 1-year trial, <sup>23</sup> Wi-Fi Connect <sup>68</sup> with up to 2 GB within 3-month trial. <sup>53</sup> See <a href="http://toyota.com/audio-multimedia">toyota.com/audio-multimedia</a> for details.	S	S	—	—	—	Rear-seat Blu-ray Disc <sup>™36</sup> player with 9-inch display, two wireless headphones, <sup>37</sup> wireless remote and rear audio system with 120V AC power outlet <sup>64</sup> and RCA jacks	—	—	O	S	—
Premium Audio with Dynamic Navigation <sup>24</sup> — includes eight speakers, 7-in. touch-screen, HD Radio <sup>™10</sup> USB media port, <sup>11</sup> two USB charge ports, <sup>11</sup> Dynamic Navigation <sup>24</sup> with up to 3-year trial, <sup>26</sup> Dynamic POI Search, Dynamic Voice Recognition <sup>65</sup> hands-free phone capability and music streaming <sup>13</sup> via Bluetooth <sup>®13</sup> wireless technology, Android Auto <sup>™14</sup> & Apple CarPlay <sup>®15</sup> compatible, SiriusXM <sup>®16</sup> with 3-month All Access trial. <sup>17</sup> Connected Services <sup>25</sup> — Safety Connect <sup>®18</sup> with 1-year trial, <sup>19</sup> Service Connect <sup>20</sup> with 10-year trial, <sup>21</sup> Remote Connect <sup>22</sup> with 1-year trial, <sup>23</sup> Wi-Fi Connect <sup>68</sup> with up to 2 GB within 3-month trial. <sup>53</sup> Destination Assist <sup>27</sup> with 1-year trial. <sup>28</sup> See <a href="http://toyota.com/audio-multimedia">toyota.com/audio-multimedia</a> for details.	P	P	—	—	—	Easy-clean fabric-trimmed front seats; 8-way power-adjustable driver's seat; 4-way adjustable front passenger seat	S	S	—	—	—
Premium Audio with Dynamic Navigation <sup>24</sup> — includes 12 speakers, 7-in. touch-screen, HD Radio <sup>™10</sup> USB media port, <sup>11</sup> two USB charge ports, <sup>11</sup> Dynamic Navigation <sup>24</sup> with up to 3-year trial, <sup>26</sup> Dynamic POI Search, Dynamic Voice Recognition <sup>65</sup> hands-free phone capability and music streaming <sup>13</sup> via Bluetooth <sup>®13</sup> wireless technology, Android Auto <sup>™14</sup> & Apple CarPlay <sup>®15</sup> compatible, SiriusXM <sup>®16</sup> with 3-month All Access trial. <sup>17</sup> Connected Services <sup>25</sup> — Safety Connect <sup>®18</sup> with 1-year trial, <sup>19</sup> Service Connect <sup>20</sup> with 10-year trial, <sup>21</sup> Remote Connect <sup>22</sup> with 1-year trial, <sup>23</sup> Wi-Fi Connect <sup>68</sup> with up to 2 GB within 3-month trial. <sup>53</sup> Destination Assist <sup>27</sup> with 1-year trial. <sup>28</sup> See <a href="http://toyota.com/audio-multimedia">toyota.com/audio-multimedia</a> for details.	—	—	—	—	—	Leather-trimmed and heated front seats; 10-way power-adjustable driver's seat; 6-way power-adjustable front passenger seat	P	P	S	—	—
Premium Audio with Dynamic Navigation <sup>24</sup> and JBL <sup>®</sup> w/Clari-Fi <sup>®29</sup> — includes 14 speakers, including subwoofer and amplifier, 7-in. touch-screen, HD Radio <sup>™10</sup> USB media port, <sup>11</sup> two USB charge ports, <sup>11</sup> Dynamic Navigation <sup>24</sup> with up to 3-year trial, <sup>26</sup> Dynamic POI Search, Dynamic Voice Recognition <sup>65</sup> hands-free phone capability and music streaming <sup>13</sup> via Bluetooth <sup>®13</sup> wireless technology, Android Auto <sup>™14</sup> & Apple CarPlay <sup>®15</sup> compatible, SiriusXM <sup>®16</sup> with 3-month All Access trial. <sup>17</sup> Connected Services <sup>25</sup> — Safety Connect <sup>®18</sup> with 1-year trial, <sup>19</sup> Service Connect <sup>20</sup> with 10-year trial, <sup>21</sup> Remote Connect <sup>22</sup> with 1-year trial, <sup>23</sup> Wi-Fi Connect <sup>68</sup> with up to 2 GB within 3-month trial. <sup>53</sup> Destination Assist <sup>27</sup> with 1-year trial. <sup>28</sup> See <a href="http://toyota.com/audio-multimedia">toyota.com/audio-multimedia</a> for details.	—	—	S	—	—	Black TRD Pro leather-trimmed heated front bucket seats with red contrast stitching and "TRD Pro" stitched headrest; 10-way power-adjustable driver's seat; 6-way adjustable front passenger seat	—	—	—	—	S
						Perforated leather-trimmed heated and ventilated front seats; 10-way power-adjustable driver's seat with power thigh and lumbar support; 6-way power-adjustable front passenger seat	—	—	—	S	—
						8-passenger seating with easy-clean fabric	S	—	—	—	—
						8-passenger seating with leather trim	P	—	S	—	—
						7-passenger seating with easy-clean fabric and second-row captain's chairs	—	S	—	—	—
						7-passenger seating with black leather trim and second-row captain's chairs	—	P	—	—	—
						7-passenger seating with black leather trim with red stitching and second-row captain's chairs	—	—	—	—	S
						7-passenger seating with leather trim and second-row captain's chairs	—	—	O	—	—
						7-passenger seating with perforated leather-trimmed and heated second-row captain's chairs and multi-function center console	—	—	—	S	—
						Easy-clean fabric-trimmed 40/20/40 split, sliding, reclining, <sup>38</sup> fold-flat second-row seat with one-touch access to third-row seat	S	—	—	—	—
						Easy-clean fabric trimmed second-row captain's chairs with one-touch access to third-row seat	—	S	—	—	—

See numbered footnotes in Disclosures section.

S = Standard    O = Optional    — = Not Available    P = Feature is available as part of an option package.

FEATURES<sup>9</sup> (continued)

INTERIOR (continued)	SR5	TRD SPORT	LIMITED	PLATINUM	TRD PRO	SR5	TRD SPORT	LIMITED	PLATINUM	TRD PRO
Leather-trimmed 40/20/40 split, sliding, reclining, <sup>38</sup> fold-flat second-row seat with one-touch access to third-row seat	P	—	S	—	—	S	S	S	S	S
Leather-trimmed second-row captain's chairs with one-touch access to third-row seat	—	P	—	—	S	—	—	S	S	—
Perforated leather-trimmed second-row heated captain's chairs with multi-function center console	—	—	—	S	—	S	S	S	S	S
Easy-clean fabric-trimmed 60/40 split, reclining, <sup>38</sup> fold-flat third-row seat with folding headrests	S	S	—	—	—	S	S	S	S	S
Leather-trimmed power 60/40 split, power reclining, <sup>38</sup> fold-flat third-row seat with folding headrests	P	P	S	—	S	S	S	S	—	S
Perforated leather-trimmed power 60/40 split, power reclining <sup>38</sup> fold-flat third-row seat with folding headrests	—	—	—	S	—	—	—	—	S	—
Leather-trimmed tilt/telescopic steering wheel with audio, voice-command, <i>Bluetooth</i> <sup>®13</sup> hands-free phone controls, Multi-Information Display, Dynamic Radar Cruise Control <sup>35</sup> and Lane Departure Alert <sup>31</sup> controls	S	S	S	—	S	—	—	O	S	—
Leather-trimmed power tilt/telescopic steering wheel with bird's-eye maple style accents, memory, audio, <i>Bluetooth</i> <sup>®13</sup> hands-free phone controls, Multi-Information Display, Dynamic Radar Cruise Control <sup>35</sup> and Lane Departure Alert <sup>31</sup> controls	—	—	—	S	—	—	—	S	S	—
Bird's-eye maple style accents adorning the steering wheel, shift knob and door panels	—	—	—	S	—	—	—	—	—	S
Smart Key System <sup>39</sup> on front doors and liftgate with Push Button Start and remote keyless entry system with illuminated entry	S	S	S	S	S	S	S	S	S	S
Power windows with driver and front passenger one-touch auto up/down and jam protection	S	S	S	S	S	—	—	S	S	—
<b>SAFETY AND CONVENIENCE</b>						Power rear window with auto up/down, jam protection and defogger	S	S	S	S
Toyota Safety Sense™ P (TSS-P) <sup>34</sup> — includes Pre-Collision System with Pedestrian Detection (PCS w/PD), <sup>30</sup> Lane Departure Alert (LDA), <sup>31</sup> Automatic High Beams (AHB) <sup>43</sup> and Dynamic Radar Cruise Control (DRCC) <sup>35</sup>	S	S	S	S	S	Second- and third-row retractable window sunshades	—	—	S	S
Blind Spot Monitor (BSM) <sup>44</sup> and Rear Cross Traffic Alert (RCTA) <sup>45</sup>	S	S	S	S	S	Power door locks with shift-linked automatic lock/unlock feature	S	S	S	S
<b>STAR SAFETY SYSTEM</b> ™ Star Safety System™ — includes Vehicle Stability Control (VSC), <sup>46</sup> Traction Control (TRAC), Anti-lock Brake System (ABS), Electronic Brake-force Distribution (EBD), Brake Assist (BA) <sup>4</sup> and Smart Stop Technology <sup>®</sup> (SST). <sup>47</sup> At speeds greater than five miles per hour, when the accelerator is depressed first and the brakes are then applied firmly for longer than one-half second, Smart Stop Technology <sup>®</sup> is designed to help the driver bring the vehicle to a stop.	S	S	S	S	S	Auto-dimming rearview mirror with compass and HomeLink <sup>®40</sup> universal transceiver	P	P	S	S
Driver and front passenger Advanced Airbag System <sup>48</sup>	S	S	S	S	S	Overhead console with storage and maplights	S	S	S	S
Driver and front passenger seat-mounted side airbags, driver and front passenger knee airbags and all-row side curtain airbags <sup>48</sup>	S	S	S	S	S	Multi-function center console with two front and two rear cup holders, four 12V auxiliary power outlets, <sup>70</sup> sliding covered armrest and storage compartment	S	S	S	—
Driver and front passenger seat-mounted side airbags, driver and front passenger knee airbags, and all-row Roll-sensing Side Curtain Airbags (RSCA) <sup>48</sup> (4x4 models only)	S	S	S	S	S	Multi-function center console with two front and two rear cup holders, three 12V auxiliary power outlets, <sup>70</sup> one 120V AC power outlet, <sup>64</sup> RCA jacks and sliding covered armrest and storage compartment	—	—	O	S
Driver and front passenger seatbelt warning sensor	S	S	S	S	S	Front cup holders with chrome trim in center console	—	—	S	S
						Cargo area 12V auxiliary power outlet <sup>70</sup> and grocery bag hooks	S	S	S	S
						Dual extendable sun visors with vanity mirrors	S	S	—	—
						Dual extendable sun visors with illuminated vanity mirrors and secondary visors	—	—	S	S
						16 (18 on Platinum) cup and bottle holders (total)	S	S	S	S
						TRD shift knob	—	S	—	—
						Sequoia stitched floor mats <sup>41</sup>	S	—	S	S
						TRD Sport stitched floor mats <sup>41</sup>	—	S	—	—
						TRD Pro all-weather floor mats <sup>41</sup>	—	—	—	S
						3-point seatbelts for all seating positions; driver-side Emergency Locking Retractor (ELR) and Automatic/Emergency Locking Retractor (ALR/ELR) on all passenger belts	S	S	S	S
						Driver and front passenger seatbelt pretensioners with force limiters	S	S	S	S
						LATCH (Lower Anchors and Tethers for Children) includes lower anchors on all second-row seats and tether anchors on all second-row seats and center third-row seat	S	S	S	S
						Child-protector rear door locks and power window lockout	S	S	S	S
						Front energy-absorbing crumple zone	S	S	S	S
						Side-impact door beams	S	S	S	S
						Energy-dissipating interior trim	S	S	S	S
						Blind Spot Monitor (BSM) <sup>44</sup> lane change assist	S	S	S	S
						Rear Cross-Traffic Alert (RCTA) <sup>45</sup>	S	S	S	S
						Two-position power memory driver's seat and memory outside mirrors	—	—	P	S
						Front and rear parking assist sonar <sup>49</sup>	S	S	S	S
						Trailer-Sway Control (TSC) <sup>50</sup>	S	S	S	S
						Anti-theft system with engine immobilizer <sup>51</sup>	S	S	S	S

See numbered footnotes in Disclosures section.

S = Standard    O = Optional    — = Not Available    P = Feature is available as part of an option package.

FEATURES<sup>5</sup> (continued)

PACKAGES AND OPTIONS

	SR5	TRD SPORT	LIMITED	PLATINUM	TRD PRO	SR5	TRD SPORT	LIMITED	PLATINUM	TRD PRO
Premium Package — includes 8-passenger leather trimmed seats, heated 10-way power-adjustable driver's seat and 6-way power-adjustable front passenger seat, power reclining <sup>38</sup> and fold-flat third-row seating, Premium Audio with Dynamic Navigation <sup>24</sup> Dynamic Navigation <sup>24</sup> with up to 3-year trial, <sup>26</sup> auto-dimming rearview mirror with compass and HomeLink <sup>840</sup> universal transceiver	P	—	—	—	—	—	—	P	—	—
TRD Sport Premium Package — includes 7-passenger black leather-trimmed seats with contrast stitching, heated 10-way power-adjustable driver's seat and 6-way power-adjustable front passenger seat, power reclining <sup>38</sup> and fold-flat third-row seating, Premium Audio with Dynamic Navigation <sup>24</sup> Dynamic Navigation <sup>24</sup> with up to 3-year trial, <sup>26</sup> auto-dimming rearview mirror with compass and HomeLink <sup>840</sup> universal transceiver	—	P	—	—	—	—	P	O	S	S
Premium JBL <sup>29</sup> Audio and Convenience Package — includes Premium Audio with Dynamic Navigation <sup>24</sup> and JBL <sup>®</sup> w/Clari-Fi <sup>29</sup> 14 speakers, including subwoofer and amplifier, two-position power memory driver's seat and memory outside mirrors.	—	—	—	—	—	—	—	—	—	—
TRD Pro black cat-back exhaust	—	—	—	—	—	—	—	—	—	O
7-passenger seating with leather trim and second-row captain's chairs	—	—	—	—	—	—	P	O	S	S
Rear-seat Blu-ray Disc <sup>TM36</sup> player with 9-in. display, two wireless headphones, <sup>37</sup> wireless remote and rear audio system with 120V AC power outlet <sup>64</sup> and RCA jacks	—	—	—	—	—	—	—	O	S	—

S = Standard O = Optional — = Not Available P = Feature is available as part of an option package.

For more information about our available audio systems, as well as Bluetooth<sup>®13</sup>-compatible features, please contact your local Toyota dealer.

DISCLOSURES

**1.** Torsen<sup>®</sup> is a registered trademark of Zexel Torsen, Inc. **2.** Bilstein<sup>®</sup> is a registered trademark of ThyssenKrupp Bilstein GmbH FED REP GERMANY. **3.** FOX<sup>®</sup> is a registered trademark of FOX Factory, Inc. (©FOX Factory, Inc.) **4.** Brake Assist is designed to help the driver take advantage of ABS and is not a substitute for safe driving practices. Braking effectiveness also depends on proper vehicle maintenance, tire and road conditions. See *Owner's Manual* for additional limitations and details. **5.** Cargo and load capacity limited by weight and distribution. Always properly secure cargo and cargo area. **6.** Before towing, confirm your vehicle and trailer are compatible, hooked up and loaded properly and that you have any necessary additional equipment. Do not exceed any Weight Ratings and follow all instructions in your *Owner's Manual*. The maximum you can tow depends on base curb weight plus the total weight of any cargo, occupants, and added vehicle equipment. "Added vehicle equipment" includes additional standard/optional equipment and accessories added by the manufacturer, dealers, and/or vehicle owners. The only way to be certain of your vehicle's exact curb weight is to weigh your vehicle without passengers or cargo. **7.** 2020 EPA-estimated mileage. Actual mileage will vary. **8.** Toyota strives to build vehicles to match customer interest and thus they typically are built with popular options and option packages. Not all options/packages are available separately and some may not be available in all regions of the country. If you would prefer a vehicle with no or different options, contact your dealer to check for current availability or the possibility of placing a special order. Color(s) depicted may vary based on multiple factors, including ambient lighting and the format in which it is being viewed (e.g., computer, mobile device or print). **9.** Rigid Industries<sup>®</sup> is a registered trademark of JST Performance, LLC d/b/a Rigid Industries. **10.** HD Radio<sup>™</sup> Technology manufactured under license from iBiquity Digital Corporation U.S. and Foreign Patents. HD Radio<sup>™</sup> and the HD, HD Radio, and "Arc" logos are proprietary trademarks of iBiquity Digital Corp. **11.** May not be compatible with all mobile phones, MP3/WMA players and like models. **12.** Advanced voice recognition capabilities vary by head unit. **13.** The Bluetooth<sup>®</sup> word mark and logos are registered trademarks owned by Bluetooth SIG, Inc., and any use of such marks by Toyota is under license. A compatible Bluetooth<sup>®</sup>-enabled phone must first be paired. Phone performance depends on software, coverage and carrier. **14.** Vehicle user interface is a product of Google and its terms and privacy statement apply. To use Android Auto on your car display, you'll need an Android Auto compatible vehicle or aftermarket stereo, an Android phone running Android 5.0 (Lollipop) or higher, and the Android Auto app. Google, Android and Android Auto are trademarks of Google LLC. **15.** Apps and services are subject to change at any time without notice. Data charges may apply. Apple CarPlay<sup>®</sup> functionality requires a compatible iPhone<sup>®</sup> connected with an approved data cable into the USB media port. Apple CarPlay<sup>®</sup> is a registered trademark of Apple Inc. **16.** SiriusXM<sup>®</sup> audio services require a subscription sold separately by Sirius XM Radio Inc. If you decide to continue service after your trial, the subscription plan you choose will automatically renew thereafter and you will be charged according to your chosen payment method at then-current rates. Fees and taxes apply. To cancel, you must call SiriusXM at 1-866-635-2349. See SiriusXM Customer Agreement for complete terms at [www.siriusxm.com](http://www.siriusxm.com). All fees and programming subject to change. Not all vehicles or devices are capable of receiving all services offered by SiriusXM. Current information and features may not be available in all locations, or on all receivers. ©2019 Sirius XM Radio Inc. SiriusXM and all related marks and logos are trademarks of Sirius XM Radio Inc. **17.** SiriusXM All Access trial length and service availability may vary by model, model year or trim. **18.** Toyota Safety Connect<sup>®</sup> depends on an operative telematics device, a cellular connection, navigation map data and GPS signal strength and other factors outside of Toyota's control, all of which can limit system functionality or availability, including access to response center and emergency support. Stolen vehicle police report required to use Stolen Vehicle Locator. Registration required. Service subject to change at any time without notice. Terms and conditions of subscription service agreement apply. Service may vary by vehicle and region. See usage precautions and service limitations in *Owner's Manual* and at [toyota.com/connected-services/](http://toyota.com/connected-services/) for additional details. To learn about Toyota's data collection, use, sharing and retention, please visit <https://www.toyota.com/privacyvts/>. **19.** The Safety Connect<sup>®</sup> trial period is at no extra cost and begins on the original date of purchase or lease of a new vehicle. After the trial period expires, enrollment in paid subscription is required to access the service. **20.** Information provided is based on the last time data was collected from the vehicle and may not be up to date. Service Connect depends on an operative telematics device, a cellular connection, navigation map data, GPS signal strength and other factors outside of Toyota's control, which can limit functionality or availability. Service may vary by vehicle and region. Registration required. Service subject to change at any time without notice. Terms and conditions of subscription service agreement apply. See usage precautions and service limitations in *Owner's Manual* and at [toyota.com/connected-services/](http://toyota.com/connected-services/) for additional details. To learn about Toyota's data collection, use, sharing and retention, please visit <https://www.toyota.com/privacyvts/>. **21.** The Service Connect trial period is at no extra cost and begins on the original date of purchase or lease of a new vehicle. After the respective trial period expires, enrollment in paid subscription is required to access the service. **22.** Use only if aware of circumstances surrounding vehicle and it is legal and safe to do so (e.g., do not remotely start engine if vehicle is in an enclosed space or vehicle is occupied by a child). Remote Connect depends on an operative telematics device, a cellular connection, GPS signal strength and other factors outside of Toyota's control, which can limit system functionality and availability. Service may vary by vehicle and region. Registration and app download required. Terms and conditions of subscription service agreement apply. Data charges may apply. Remote start/stop not available on manual-transmission-equipped vehicles. Services subject to change at any time without notice. See usage precautions and service limitations in *Owner's Manual* and at <https://www.toyota.com/connected-services/> for additional details. To learn about Toyota's data collection, use, sharing and retention, please visit <https://www.toyota.com/privacyvts/>. **23.** The Remote Connect trial period is at no extra cost and begins on the original date of purchase or lease of a new vehicle. After the trial period expires, enrollment in a paid subscription is required to access the service. Terms and conditions apply. **24.** Dynamic Navigation depends on an operative telematics device, a cellular connection, navigation map data and GPS signal strength, and other factors outside of Toyota's control, which can limit system functionality or availability. Services not available in every city or roadway. Use common sense when relying on information provided. Service may vary by vehicle and region. Registration is required. Terms and conditions of subscription services agreement apply. See *Owner's Manual* and <https://toyota.com/connected-services/> for additional limitations and details. To learn about Toyota's data collection, use, sharing and retention, please visit <https://www.toyota.com/privacyvts/>. **25.** Connected Services depends on an operative telematics device, a cellular connection, navigation map data, GPS signal strength and other factors outside of Toyota's control, all of which can limit system functionality or availability, including access to response center and emergency

## DISCLOSURES (continued)

support. Service may vary by vehicle and region. Terms and conditions of subscription service agreement apply. Data charges may apply. Apps and services subject to change at any time without notice. See [toyota.com/connected-services](https://toyota.com/connected-services) for details. To learn about Toyota's data collection, use, sharing and retention, please visit <https://www.toyota.com/privacyvts>. Stolen vehicle police report required to use Stolen Vehicle Locator. **26.** The Dynamic Navigation three-year trial period begins on the original date of purchase or lease of a new vehicle. After the trial period expires, enrollment in paid subscription is required to access the service. **27.** Destination Assist depends on an operative telematics device, a cellular connection, navigation map data and GPS signal strength and other factors outside of Toyota's control, which can limit system functionality or availability. Use common sense when relying on this information. Service may vary by vehicle and region. Registration required. Services subject to change at any time without notice. Terms and conditions of subscription services agreement apply. See *Owner's Manual* and [toyota.com/connected-services](https://toyota.com/connected-services) for additional limitations and details. To learn about Toyota's data collection, use, sharing and retention, please visit <https://www.toyota.com/privacyvts/>. **28.** The Destination Assist trial period is at no extra cost and begins on the original date of purchase or lease of a new vehicle. After the trial period expires, enrollment in a paid subscription is required to access the service. **29.** JBL® and Clari-Fi® are registered trademarks of Harman International Industries, Inc. **30.** The Pre-Collision System (PCS) with Pedestrian Detection (PD) is designed to determine if impact is imminent and help reduce impact speed and damage in certain frontal collisions involving a vehicle or a pedestrian. PCS w/PD is not a substitute for safe and attentive driving. System effectiveness depends on many factors, such as speed, size and position of pedestrian and weather, light and road conditions. See *Owner's Manual* for additional limitations and details. **31.** Lane Departure Alert is designed to read visible lane markers under certain conditions, and provide visual and audible alerts when lane departure is detected. It is not a collision-avoidance system or a substitute for safe and attentive driving. Effectiveness is dependent on many factors including road, weather and vehicle conditions. See *Owner's Manual* for additional limitations and details. **32.** Building and/or parking structures may limit system effectiveness. Stolen vehicle police report required to use Stolen Vehicle Locator. For additional assistance contact the Toyota Customer Experience Center at 1-800-331-4331. **33.** The Tire Pressure Monitor System alerts the driver when tire pressure is critically low. For optimal tire wear and performance, tire pressure should be checked regularly with a gauge; do not rely solely on the monitor system. See *Owner's Manual* for additional limitations and details. **34.** Toyota Safety Sense™ effectiveness is dependent on many factors including road, weather and vehicle conditions. Drivers are responsible for their own safe driving. Always pay attention to your surroundings and drive safely. See *Owner's Manual* for additional limitations and details. **35.** Dynamic Radar Cruise Control (DRCC) is designed to assist the driver and is not a substitute for safe and attentive driving practices. System effectiveness is dependent on many factors including road, weather and traffic conditions. See *Owner's Manual* for additional limitations and details. **36.** A single disc DVD player is included. A separate DVD player or game system utilizing the center console's video/audio inputs is required in order to use the split-screen function of the Dual View system. **37.** Headphones are for passenger use only. Do not use while operating vehicle. **38.** Rear-seat leg rest may not fully raise based on height of passenger. Do not allow passengers to sit in a seat that has been fully or severely reclined while driving. This feature is intended for use only when the vehicle is parked. While the vehicle is being driven, all vehicle occupants should have the seatback upright, sit well back in the seat and properly wear the seatbelts provided. In the event of a collision, the more the seat is reclined, the greater the risk of death or personal injury. See *Owner's Manual* for details. **39.** The Smart Key System may interfere with some pacemakers or cardiac defibrillators. If you have one of these medical devices, please talk to your doctor to see if you should deactivate this system. **40.** HomeLink® and the HomeLink® house icon are registered trademarks of Genex Corporation. **41.** This floor mat/floor liner was designed specifically for use in your model and model year vehicle and SHOULD NOT be used in any other vehicle. To avoid potential interference with pedal operation, each mat/liner must be secured with its fasteners. Do not install a floor mat/floor liner on top of an existing floor mat/floor liner. **42.** The hands-free sensor can be affected by water, weather, dirt and other conditions and may not operate properly under certain conditions. See *Owner's Manual* for additional limitations and details. **43.** Automatic High Beams operate at speeds above 25 mph. Factors such as a dirty windshield, weather, lighting and terrain limit effectiveness, requiring the driver to manually operate the high beams. See *Owner's Manual* for additional limitations and details. **44.** Do not rely exclusively on the Blind Spot Monitor. Always look over your shoulder and use your turn signal. There are limitations to the function, detection and range of the monitor. See *Owner's Manual* for additional limitations and details. **45.** Do not rely exclusively on the Rear Cross-Traffic Alert system. Always look over your shoulder and use your mirrors to confirm rear clearance. There are limitations to the function, detection and range of the system. See *Owner's Manual* for additional limitations and details. **46.** Vehicle Stability Control is an electronic system designed to help the driver maintain vehicle control under adverse conditions. It is not a substitute for safe and attentive driving practices. Factors including speed, road conditions, weather and driver steering input can all affect whether VSC will be effective in preventing a loss of control. See *Owner's Manual* for additional limitations and details. **47.** Smart Stop Technology® operates only in the event of certain contemporaneous brake and accelerator pedal applications. When engaged, the system will reduce power to help the brakes bring the vehicle to a stop. Factors including speed, road conditions and driver input can all impact stopping distance. Smart Stop Technology® is not a substitute for safe and attentive driving and does not guarantee instant stopping. See *Owner's Manual* for additional limitations and details. **48.** Airbag systems are Supplemental Restraint Systems and are designed to inflate only under certain conditions and in certain types of severe collisions. To decrease the risk of injury from an inflating airbag, always wear seatbelts and sit upright in the middle of the seat as far back as possible. Do not put objects in front of an airbag or around the seatback. Do not use a rearward-facing child seat in any front passenger seat. See *Owner's Manual* for additional limitations and details. **49.** Front and rear parking assist sonar is designed to warn drivers of potential front and rear collisions at speeds of 6 mph or less. Certain vehicle and environmental factors, including an object's shape and composition, may affect the ability of the front and rear parking assist sonar to detect it. Always look around outside the vehicle and use mirrors to confirm clearance. See *Owner's Manual* for additional limitations and details. **50.** Trailer-Sway Control (TSC) is an electronic system designed to help the driver maintain vehicle control under adverse conditions. It is not a substitute for safe driving practices. Factors including speed, road conditions, weather and driver steering input can all affect whether TSC will be effective in preventing a loss of control. See *Owner's Manual* for additional limitations and details. **51.** The engine immobilizer is a state-of-the-art anti-theft system that is initiated when you insert your key into the ignition switch or bring a Smart Key fob into the vehicle. The engine will only start if the code in the transponder chip inside the key/fob matches the code in the vehicle's immobilizer. The transponder chip is embedded in the key/fob and can be costly to replace. If you lose a key or fob, your Toyota dealer can help or go to [www.aloa.org](http://www.aloa.org) to find a qualified locksmith in your area who can perform high-security key service. **52.** BBS® is a registered trademark of BBS of America, Inc. **53.** The Wi-Fi Connect trial period is at no extra cost and begins on the date of activation. After the trial period expires, enrollment in a paid subscription is required to access the service. Terms and conditions apply. **54.** Extra-cost color. **55.** The Toyota Sequoia is designed to meet most off-road driving requirements, but off-roading is inherently dangerous and may result in vehicle damage. Toyota encourages responsible operation to help protect you, your vehicle and the environment. Seatbelts should be worn at all times. Do not allow passengers to ride in cargo area. **56.** Auto LSD is an electronic, brake-actuated limited-slip differential that automatically activates when VSC is disengaged at low speeds. See *Owner's Manual* for additional limitations and details. **57.** Always drive safely and obey traffic laws. Apps, prices and services vary by phone carrier and are subject to change at any time without notice. Subject to smartphone connectivity and capability. Data charges may apply. **58.** iPhone® is a registered trademark of Apple Inc. All rights reserved. **59.** Requires adequate cellular coverage and GPS signal strength. May not work in all areas. Service may vary by vehicle and region. See Toyota Dealer for details and exclusions. **60.** The backup camera does not provide a comprehensive view of the rear area of the vehicle and you should also look around the vehicle, using mirrors to confirm rearward clearance. Environmental conditions may limit effectiveness and view may become obscured. See *Owner's Manual* for additional limitations and details. **61.** Available only for vehicles equipped with factory security and factory remote keyless entry system or Smart Key System. **62.** Genuine Toyota Paint Protection Film by 3M™ is designed for specific sections of the vehicle most prone to chipping and may vary depending on vehicle model. Select applications may require an additional charge. Toyota Genuine Accessory Warranty only applies when installation is performed by a trained Toyota-approved installer. See Toyota dealer for details. **63.** The universal tablet holder is intended for passengers only. Drivers should always be sure to obey traffic regulations and maintain awareness of the road and traffic conditions at all times. Use of aftermarket accessories may pose an increased risk of injury to occupants in the event of an accident. Tablet sold separately. **64.** Do not exceed 120V. See *Owner's Manual* for additional limitations and details. **65.** Dynamic voice recognition capabilities vary by head unit. **66.** Do not overload your vehicle. See *Owner's Manual* for weight limits and restrictions. Always properly secure cargo and cargo area. **67.** Not all smartwatches are compatible with Remote Connect: Samsung Gear, Fitbit, Garmin are not compatible. **68.** Eligible vehicle and wireless service required. Coverage and service not available everywhere. Valid in the contiguous U.S. and Alaska. Do not drive distracted. Go to [att.com/toyota](http://att.com/toyota) for terms and conditions. **69.** Concentrating on the road should always be your first priority while driving. **70.** Rated for 12 volts. See *Owner's Manual* for additional limitations and details.

## CARS BUILT FOR THE WAY YOU LIVE

At Toyota, we build cars for how you live. From building advanced safety features designed to help prevent crashes to driving cross-country to understand how we can make your driving experience better, our work starts with understanding your needs. Building cars for how you live also means thinking about tomorrow — from fuel efficiency and environmental innovations, to things beyond cars, like a bicycle that you can control with your mind. And because what we learn building cars can help improve lives in other places, we do things like help communities rebuild their homes quickly after a disaster and work with soup kitchens to help them serve more people faster. Toyota. Built for how you live. Together we are going places.

## WARRANTIES

Every Toyota Car, Truck and SUV is built to exceptional standards. And that's not idle boasting. We back it up with these Limited Warranty Coverages:

**Basic:** 36 months/36,000 miles (all components other than normal wear and maintenance items).

**Powertrain:** 60 months/60,000 miles (engine, transmission/transaxle, drive system, seatbelts and airbags).

**Rust-Through:** 60 months/unlimited miles (corrosion perforation of sheet metal).

**Emissions:** Coverages vary under Federal and California regulations. Refer to applicable *Warranty and Maintenance Guide* for details.

**Accessories:** For Genuine Toyota Accessories purchased at the time of the new vehicle purchase, the Toyota Accessory Warranty coverage is in effect for 36 months/36,000 miles from the vehicle's in-service date, which is the same coverage as the Toyota New Vehicle Limited Warranty.

Toyota strives to build vehicles to match customer interest and thus they typically are built with popular options and option packages. Not all options/packages are available separately and some may not be available in all regions of the country. See [toyota.com](http://toyota.com) for information about options/packages commonly available in your area. If you would prefer a vehicle without any or with different options, contact your dealer to check for current availability or the possibility of placing a special order.

Color(s) depicted may vary based on multiple factors, including ambient lighting and the format in which it is being viewed (e.g., computer, mobile device or print).

For Genuine Toyota Accessories purchased after the new vehicle purchase the coverage is 12 months, regardless of mileage, from the date the accessory was installed on the vehicle, or the remainder of any applicable new vehicle warranty, whichever provides greater coverage.

You may be eligible for transportation assistance if it's necessary that your vehicle be kept overnight for repairs covered under warranty. Please see your authorized Toyota dealership for further details.

For complete details about Toyota's warranties, please visit [www.toyota.com](http://www.toyota.com), refer to the applicable *Warranty and Maintenance Guide* or see your Toyota dealer.

Some vehicles are shown with available equipment. Seatbelts should be worn at all times. For details on vehicle specifications, standard features and available equipment in your area, contact your Toyota dealer. A vehicle with particular equipment may not be available at the dealership. Ask your Toyota dealer to help locate a specifically equipped vehicle.

All information presented herein is based on data available at the time of posting, is subject to change without notice and pertains specifically to mainland U.S.A. vehicles only. Vehicles shown may be prototypes and/or shown with options. Actual models will vary.



For Toyota Mobility program details, go to [www.toyota.com/mobility](http://www.toyota.com/mobility) or call the Toyota Customer Assistance Center at 1-800-331-4331

