

# 2018 Sequoia



# For the family that plays harder. The 2018 Toyota Sequoia.

The 2018 Toyota Sequoia is the official SUV of unforgettable outdoor family adventures. Sequoia is anything but ordinary, and so is the precious cargo you're hauling. Sequoia comes equipped with more than enough seating and cargo space<sup>3</sup> to ensure that everyone and everything have enough room to remain comfortable on long outings and excursions. Not only is it spacious and stylish, standard Toyota Safety Sense™ P (TSS-P)<sup>24</sup> helps provides you with the safety and peace of mind that only a Toyota can provide.



Limited shown in Shoreline Blue Pearl with available Limited Premium Package.  
See numbered footnotes in Disclosures section.

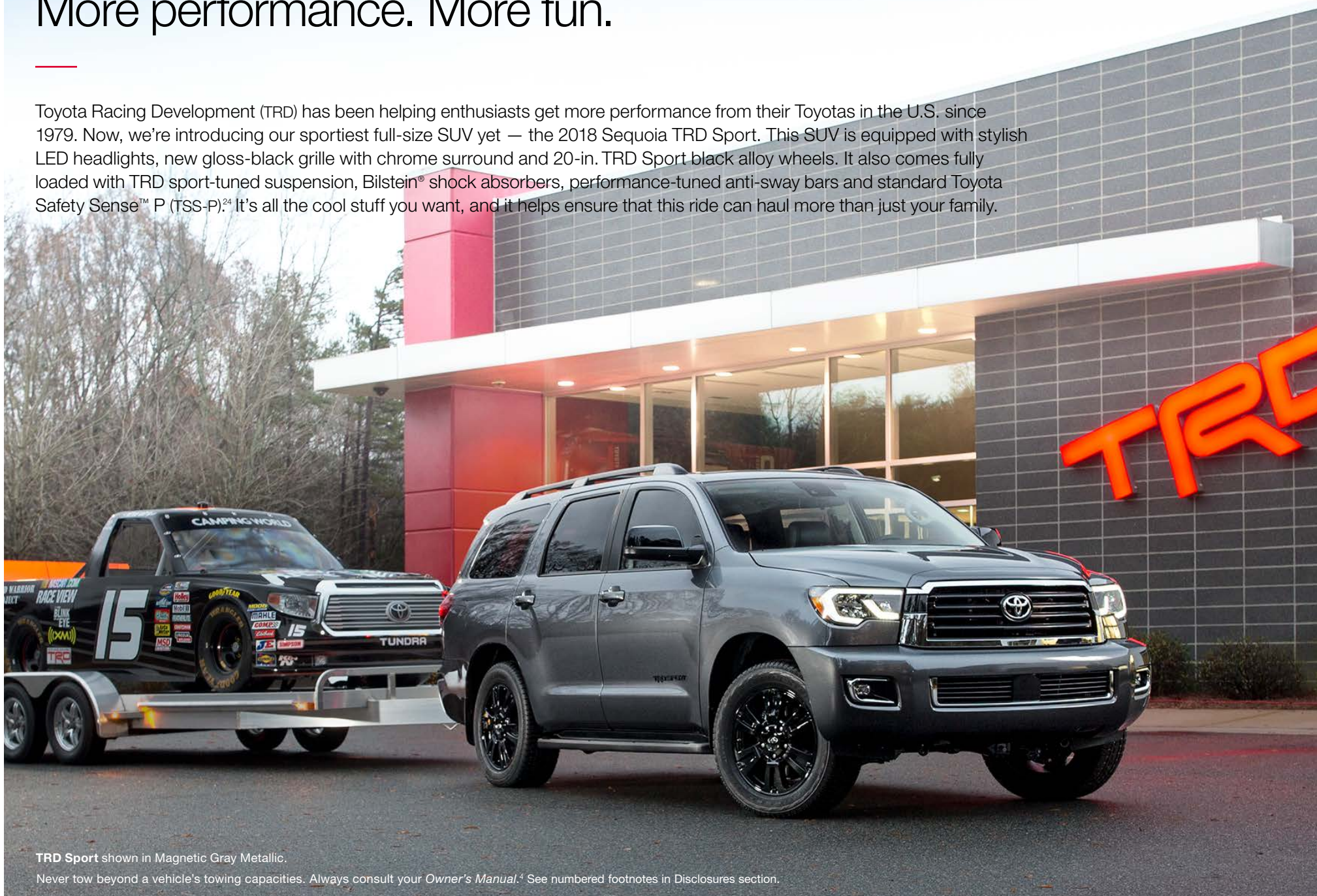


Go more places. See more things.  
Enjoy more family adventures in premium  
style and safety.



# More performance. More fun.

Toyota Racing Development (TRD) has been helping enthusiasts get more performance from their Toyotas in the U.S. since 1979. Now, we're introducing our sportiest full-size SUV yet — the 2018 Sequoia TRD Sport. This SUV is equipped with stylish LED headlights, new gloss-black grille with chrome surround and 20-in. TRD Sport black alloy wheels. It also comes fully loaded with TRD sport-tuned suspension, Bilstein® shock absorbers, performance-tuned anti-sway bars and standard Toyota Safety Sense™ P (TSS-P).<sup>24</sup> It's all the cool stuff you want, and it helps ensure that this ride can haul more than just your family.



TRD Sport shown in Magnetic Gray Metallic.

Never tow beyond a vehicle's towing capacities. Always consult your *Owner's Manual*.<sup>4</sup> See numbered footnotes in Disclosures section.



TRD Sport shown in Magnetic Gray Metallic.



#### TRD-TUNED SPORT SUSPENSION

Sequoia TRD Sport's unique suspension includes TRD front and rear sway bars and Bilstein® dampers. Tuned by the engineers at Toyota Racing Development, these components work together to give this SUV flatter cornering and a smoother ride.

#### BLACK TRD SPORT BADGING

Not a show piece, more like a badge of honor. Exclusive black TRD Sport badging signals to all that this is no ordinary SUV.





TRD Sport interior shown in Black.

# Tell your neighbors you spent the weekend “roughing it.”

In addition to available heated/ventilated driver and front passenger seats, there’s also an available rear-seat Blu-ray Disc™ player. Flying solo? No problem. Sequoia’s Entune™ Premium Audio with Integrated Navigation<sup>21</sup> and App Suite<sup>14</sup> makes for one heck of a copilot. Music, navigation and the ability to Yelp® restaurants and make dinner reservations, Sequoia’s smart tech will leave you proud to be an owner every time you turn the ignition.



## REAR-SEAT BLU-RAY DISC™ PLAYER

Sequoia’s second-row seat will have your kids hoping they’re not there yet. That’s because they can watch the latest movies or play video games on the available rear-seat Blu-ray Disc™ player with 9-in. display. Plus, all their movies and games will stow tidily away in Sequoia’s many storage compartments. And to keep front-seat occupants from feeling left out, Sequoia offers an excellent JBL Synthesis® audio system with 14 speakers.



## ENTUNE™ PREMIUM AUDIO WITH INTEGRATED NAVIGATION AND APP SUITE

Sequoia takes high tech even higher with the available new Entune™ Premium Audio system with Integrated Navigation<sup>21</sup> and App Suite<sup>14</sup>. With the Entune® App Suite, you have a collection of popular apps including Destination Search, iHeartRadio, MovieTickets.com, OpenTable®, Pandora,<sup>15</sup> Yelp®, Facebook Places and Slacker Radio — all just a touch away. Need info on your stocks, weather, sports or fuel prices? No problem. Real-time info is included, even your local weather forecast to help you plan your day.



## STORAGE COMPARTMENTS

In addition to its vast cargo area and a multitude of cup holders, Sequoia offers a variety of other storage options. The dual-level glove compartment has a large compartment below for oversized items and a smaller compartment above for documents and other flat items.



Platinum interior shown in Red Rock.

# If only your kids' playdates were this flexible.

No matter what you've got planned, Sequoia will exceed expectations. Both the sliding second-row and third-row seats fold flat, making it easy to load and unload all the gear your road trip requires. And the split-fold seat design lets you choose how to stow your cargo:<sup>3</sup> upright or flat. Of course, with its spacious interior, reclining third-row seat and available second-row console, Sequoia is as accommodating to passengers as it is to cargo. So what are you waiting for?



## POWER<sup>39</sup> RECLINING AND FOLD-FLAT THIRD-ROW SEAT

When it comes to comfort, the available power reclining and fold-flat third-row seat will make settling in for the long haul as easy as pushing a button.



## FRONT-SEAT CONSOLE

The front-seat console on Platinum offers climate control and cup holders for those in the second row. There are also RCA jacks for the rear-seat Blu-ray Disc™ player and a handy 120V AC power outlet.



## AUTOMATIC POWER LIFTGATE

Closing the available power liftgate is equally convenient. You can press a button inside the cargo area, on the dash, or use the key fob, and it will close automatically.



**120 CUBIC FEET  
OF FAMILY ROOM.**

Sequoia's big cabin offers much more than just space. There's comfortable seating for up to eight<sup>46</sup> with the standard third row, and a variety of seating configurations to handle any combination of passengers and payload. Or fold all the seats flat and reveal 120 cubic feet of cargo capacity<sup>3</sup> — perfect for that drum kit, those home improvement materials or that eight-person tent.

Platinum interior shown in Red Rock.

Cargo and load capacity limited by weight and distribution.



# Designed for safety.

Toyota Safety Sense™ (TSS)<sup>24</sup> is a bundle of active safety features on most new Toyota vehicles at no additional cost. These innovative features were designed to help protect you and your passengers from harm.



## PRE-COLLISION SYSTEM WITH PEDESTRIAN DETECTION

Using an in-vehicle camera and radar to help detect a vehicle or a pedestrian in front of you, the Pre-Collision System<sup>25</sup> with Pedestrian Detection<sup>26</sup> (PCS w/PD) can help you mitigate or avoid a potential collision. If the system determines that a frontal collision is likely, it prompts you to take action using audio and visual alerts. If you notice the potential collision and apply the brakes, PCS w/PD may apply additional force using Brake Assist.<sup>2</sup> If you don't brake in time, it may automatically apply the brakes to reduce your speed, helping to minimize the likelihood of a frontal collision or reduce its severity.



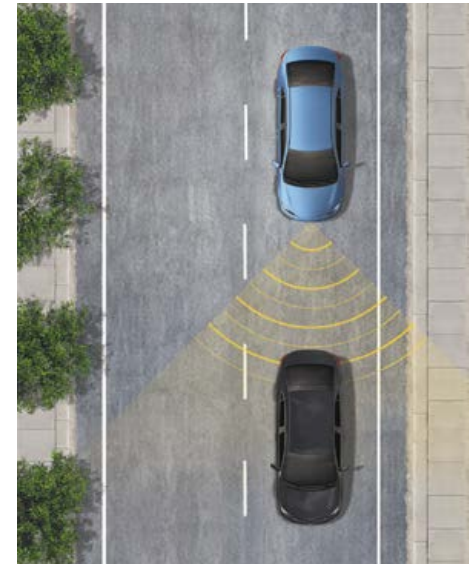
## LANE DEPARTURE ALERT WITH SWAY WARNING SYSTEM

Under certain circumstances, Lane Departure Alert (LDA)<sup>27</sup> with Sway Warning System (SWS)<sup>28</sup> is designed to detect lane departure on roads with clear markings. LDA only activates when you're traveling at a speed of 32 mph or faster. When you hear and see the alert, after carefully checking the road around you, you should safely direct your vehicle back to the center of your lane.



## AUTOMATIC HIGH BEAMS

Automatic High Beams (AHB)<sup>29</sup> are a safety system designed to help you see more clearly at night — without blinding other drivers. Designed to activate at speeds above 19 mph, AHB rely on an in-vehicle camera to help detect the headlights of oncoming vehicles and taillights of preceding vehicles, then automatically toggle between high and low beams accordingly to provide the appropriate amount of light. By using high beams more frequently, the system may allow earlier detection of pedestrians and obstacles.



## DYNAMIC RADAR CRUISE CONTROL

Intended for highways and similar to “constant speed” cruise control, Dynamic Radar Cruise Control (DRCC)<sup>30</sup> lets you drive at a preset speed. DRCC uses vehicle-to-vehicle distance control, which adjusts your speed, to help you maintain a preset distance from vehicles ahead of you that are driving at a slower speed. DRCC uses a front-grille-mounted radar and an in-vehicle camera designed to detect vehicles and their distance. If a driver is traveling slower than you, or within your preset range, DRCC will automatically slow your vehicle down without deactivating cruise control. If DRCC determines you need to slow down more, an audio and visual alert notifies you and brakes are applied. When there's no longer a vehicle driving slower than your set speed in front of you, DRCC will then accelerate and regular cruise control will resume.

# You planned your trip. We planned your return.

With Sequoia, one thing you'll never leave behind is peace of mind. Sequoia's equipped with an array of active safety features to help you avoid trouble, and passive safety features to help protect you if trouble proves unavoidable. Features such as Dynamic Radar Cruise Control (DRCC)<sup>30</sup> that automatically adjusts vehicle speed to help maintain a preset distance between you and the vehicle in front of you. We go to these lengths because, as with any excursion, there's no substitute for preparation.



## BLIND SPOT MONITOR AND REAR CROSS-TRAFFIC ALERT

The standard Blind Spot Monitor (BSM)<sup>34</sup> and Rear Cross-Traffic Alert (RCTA)<sup>35</sup> helps you identify vehicles that might be in a blind spot. When you use your turn signal and BSM detects a vehicle, it warns you with a flashing indicator light on the appropriate outside mirror.



## COMPREHENSIVE AIRBAG SYSTEM

Not all collisions call for maximum airbag deployment. In certain types of frontal collisions, the standard driver and front passenger Advanced Airbag System<sup>33</sup> senses impact severity, adjusting airbag deployment accordingly.



## STAR SAFETY SYSTEM™

Sequoia comes standard with the Star Safety System,<sup>™</sup> a suite of six advanced safety features designed to help keep drivers out of harm's way. The system includes Vehicle Stability Control (VSC),<sup>31</sup> Traction Control (TRAC), Anti-lock Brake System (ABS), Electronic Brake-force Distribution (EBD), Brake Assist (BA)<sup>2</sup> and Smart Stop Technology<sup>®</sup> (SST).<sup>32</sup>



#### ADVANCED CONTROL TECHNOLOGIES

An Anti-lock Brake System (ABS) helps prevent brakes from locking up, while the sophisticated Vehicle Stability Control (VSC)<sup>31</sup> helps prevent front and rear wheelslip by monitoring your steering angle and comparing it to the direction in which your vehicle is traveling.

#### 3-POINT SEATBELTS

All seats offer 3-point seatbelts. The front seats have pretensioners and force limiters, while second-row seats have an adjustable shoulder anchor and pretensioner on outboard seats.

#### LATCH

LATCH (Lower Anchors and Tethers for CHildren) includes lower anchors on all second-row seats and tether anchors on all second-row seats and the center seat in the third row.

SR5 shown in Silver Sky Metallic.

See numbered footnotes in Disclosures section.

# Built to turn family outings into family way-outings.

When you take your family into the sticks, you need a vehicle that's strong and reliable. Precisely what you get with Sequoia. It's forged on a fully boxed frame for strength and durability. It also boasts an available 381-hp 5.7L V8 with up to 7400 lb. of towing capacity.<sup>4</sup> Plus, a TOW/HAUL Mode that selects transmission shift points to optimize that power. So grab the gang and the gear. Where you're going, you won't need to fight for a space to put the picnic blanket.



## TRAILER-SWAY CONTROL

When towing, winds or load undulation can cause trailer sway. Trailer-Sway Control (TSC)<sup>37</sup> is designed to apply brake pressure at individual wheels and manage engine torque to help the driver maintain control of the trailer.

**Limited** shown in Shoreline Blue Metallic.

Never tow beyond a vehicle's towing capacities. Always consult your *Owner's Manual*.<sup>4</sup> Do not overload your vehicle. See *Owner's Manual* for weight limits and distribution. See numbered footnotes in Disclosures section.

CAPABILITY



**POWERFUL V8 ENGINE**

Sequoia comes standard with an all-aluminum 5.7L V8 that puts out 381 hp and 401 lb.-ft. of torque. Plus, this powerplant has received an Ultra Low Emission Vehicle II (ULEV-II) rating, because with power comes responsibility.

**ADAPTIVE SUSPENSION**

Maintaining ride height is important when the vehicle is carrying many passengers or a lot of cargo weight.<sup>3</sup> That's why Sequoia's Platinum model features rear pneumatic cylinder height-controlled suspension—allowing you to automatically adjust ride height to compensate for changes in load. And Platinum's electronically controlled Adaptive Variable Suspension system offers driver-selectable settings for Comfort, Normal and Sport.

**MULTI-MODE 4WD**

This available system can turn mountains into molehills. Just turn the shift dial to engage the 4WD mode and let the Torsen<sup>®1</sup> limited-slip center differential go to work. The differential locks up to get maximum traction on slippery or uneven surfaces.

**Platinum** shown in Blizzard Pearl.<sup>40</sup>

See numbered footnotes in Disclosures section.

CAPABILITY



An available 5.7L V8 E85 Flex Fuel<sup>41</sup> engine makes Sequoia an alternative fuel vehicle.

#### FRONT AND REAR SUSPENSION

Sequoia's independent double-wishbone front and rear suspension gives you the best of both worlds: responsive handling on pavement and a smoother ride off-road. This sophisticated suspension utilizes low-pressure gas-filled shock absorbers and hollow stabilizer bars. Also enhancing Platinum's on-road performance is Adaptive Variable Suspension (AVS) with three settings ranging from "comfort" to "sport."

#### AUTOMATIC LIMITED-SLIP DIFFERENTIAL (AUTO LSD)<sup>45</sup>

Sequoia's advanced Automatic Limited-Slip Differential (Auto LSD) uses the brakes to help reduce wheelspin and enhance traction performance on unpredictable road surfaces like sand or mud.

Platinum shown in Blizzard Pearl.<sup>40</sup>

See numbered footnotes in Disclosures section.



## SR5

### Exterior

- LED high- and low-beam headlights with auto-off feature
- Integrated LED fog lights
- Color-keyed heated power outside mirrors
- 18-in. alloy wheels
- Power tilt/slide moonroof with sliding sunshade

### Interior

- Automatic three-zone front and rear climate control with air filter
- Entune™ Multimedia Bundle<sup>7</sup> includes AM/FM CD player with MP3/WMA playback capability, touch-screen display, auxiliary audio jack, USB 2.0 port<sup>8</sup>
- Optitron instrumentation with speedometer and tachometer; LCD display with odometer and tripmeters
- Easy-clean fabric-trimmed front seats; 8-way power-adjustable driver's seat; 4-way adjustable front passenger seat
- Easy-clean fabric-trimmed 40/20/40 split, sliding, reclining, fold-flat second-row seat with one-touch access to third-row seat
- Multi-function center console with two front and two rear cup holders, two 12V auxiliary power outlets, sliding covered armrest and storage compartment

### Safety/Convenience

- Toyota Safety Sense™ P (TSS-P)<sup>24</sup> — includes Pre-Collision System<sup>25</sup> with Pedestrian Detection<sup>26</sup> (PCS w/PD), Lane Departure Alert (LDA)<sup>27</sup> with Sway Warning System (SWS)<sup>28</sup>, Automatic High Beams (AHB)<sup>29</sup> and Dynamic Radar Cruise Control (DRCC)<sup>30</sup>
- Blind Spot Monitor (BSM)<sup>34</sup> and Rear Cross-Traffic Alert (RCTA)<sup>35</sup>
- Star Safety System™

### Options

- Premium Package — includes 8-passenger leather trimmed seats, heated 10-way power-adjustable driver's seat and 4-way power-adjustable front passenger seat, power reclining and fold-flat third-row seating, Entune™ Premium Audio with Integrated Navigation<sup>21</sup> and App Suite,<sup>14</sup> auto-dimming rearview mirror with compass and HomeLink<sup>®23</sup> universal transceiver

See numbered footnotes in Disclosures section.



## TRD Sport

Adds to or replaces features on SR5.

### Exterior

- Satin black TRD Sport front door logos
- Gloss black heated power outside mirrors
- 20-in. TRD Sport black alloy wheels
- TRD Sport performance-tuned Bilstein® shocks
- TRD Sport performance-tuned anti-sway bars

### Interior

- 7-passenger seating with easy-clean fabric-trimmed front seats and second-row captain's chairs; 8-way power-adjustable driver's seat; 4-way adjustable front passenger seat

### Options

- TRD Sport Premium Package — includes 7-passenger Black leather-trimmed seats with contrast stitching, heated 10-way power-adjustable driver's seat and 4-way power-adjustable front passenger seat, power reclining and fold-flat third-row seating, Entune™ Premium Audio with Integrated Navigation<sup>21</sup> and App Suite,<sup>14</sup> auto-dimming rearview mirror with compass and HomeLink<sup>®23</sup> universal transceiver.



## Limited

Adds to or replaces features on SR5.

### Exterior

- Chrome auto-dimming heated power outside mirrors with power folding feature and turn signal indicators
- Power liftgate with jam protection
- 20-in. alloy wheels

### Interior

- Entune™ Premium Audio with Integrated Navigation<sup>21</sup> and App Suite<sup>14</sup>
- Leather-trimmed and heated front seats; 10-way power-adjustable driver's seat; 4-way power-adjustable front passenger seat
- Leather-trimmed 40/20/40 split, sliding, reclining, fold-flat second-row seat with one-touch access to third-row seat
- Leather-trimmed tilt/telescopic steering wheel with audio, voice-command, Siri® Eyes Free<sup>16</sup> and Bluetooth<sup>®11</sup> hands-free phone controls, Multi-Information Display, Dynamic Radar Cruise Control (DRCC)<sup>30</sup> and Lane Departure Alert (LDA)<sup>27</sup> controls
- Auto-dimming rearview mirror with compass and HomeLink<sup>®23</sup> universal transceiver

### Options

- Rear-seat Blu-ray Disc™ player with 9-in. display, two wireless headphones,<sup>22</sup> wireless remote and rear audio system with 120V AC power outlet and RCA jacks
- Premium JBL® Audio and Convenience Package — includes Entune™ Premium JBL Synthesis® audio with Integrated Navigation<sup>21</sup> and App Suite,<sup>14</sup> two-position power memory driver's seat and memory outside mirrors
- 7-passenger seating with leather trim and second-row captain's chairs



## Platinum

Adds to or replaces features on Limited.

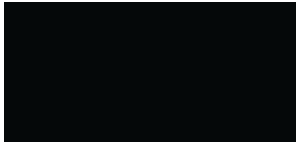
### Exterior

- Chrome auto-dimming heated power outside mirrors with power folding, reverse tilt-down and memory features, turn signal indicators and puddle lights
- 20-in. diamond-cut-finish alloy wheels

### Interior

- Entune™ Premium JBL Synthesis® audio with Integrated Navigation<sup>21</sup> and App Suite<sup>14</sup>
- Rear-seat Blu-ray Disc™ player with 9-in. display, two wireless headphones,<sup>22</sup> wireless remote and rear audio system with 120V AC power outlet and RCA jacks
- Perforated leather-trimmed heated and ventilated front seats; 10-way power-adjustable driver's seat with power thigh and lumbar support; 4-way power-adjustable front passenger seat
- 7-passenger seating with perforated leather-trimmed and heated second-row captain's chairs and multi-function center console
- Perforated leather-trimmed second-row heated captain's chairs with multi-function center console
- Perforated leather-trimmed 60/40 split, power reclining, fold-flat third-row seat with folding headrests

# Color



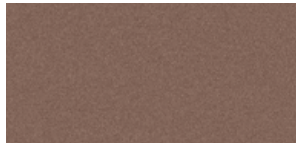
Midnight Black Metallic



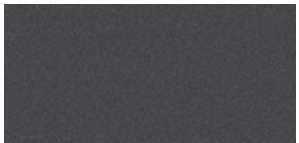
Shoreline Blue Pearl



Sizzling Crimson Mica



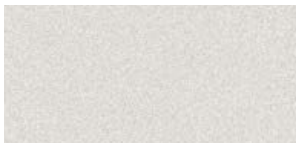
Toasted Walnut Pearl



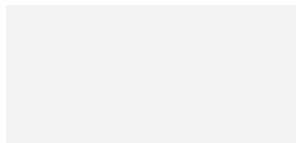
Magnetic Gray Metallic



Silver Sky Metallic

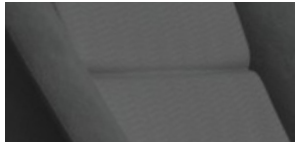


Blizzard Pearl<sup>40</sup>



Super White<sup>42</sup>

# Trim

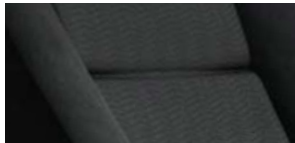


SR5 easy-clean fabric  
in Graphite



Sand Beige

Also available in



TRD Sport in Black



Limited leather-trim  
in Graphite



Sand Beige

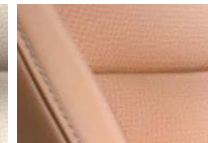
Also available in



Platinum perforated leather trim  
in Graphite



Sand Beige



Red Rock

Also available in

# Wheels



SR5 18-in. alloy wheel



TRD Sport 20-in.  
black alloy wheel



Limited 20-in.  
alloy wheel



Platinum 20-in.  
diamond-cut-finish  
alloy wheel

ACCESSORIES

Because no two families are alike. A wide range of Genuine Toyota Accessories is available to help you make your Sequoia your own. Considering how appealing Sequoia is to begin with, these quality products will be like icing on the cake. Some accessories may not be available in all regions of the country. See your Toyota dealer for details.

Alloy wheel locks  
All-weather cargo mat<sup>3</sup>  
All-weather floor liners<sup>43</sup>  
Cargo cover<sup>3</sup>  
Cargo net — envelope<sup>3</sup>  
Cargo tote<sup>3</sup>  
Carpet cargo mat<sup>3</sup>

Carpet floor mats<sup>43</sup>  
Coin holder/ashtray cup  
Doorsill protectors  
Emergency assistance kit  
First aid kit  
Front skid plate  
Glass Breakage Sensor (GBS)

Hood protector  
Paint protection film<sup>44</sup> — hood & fender  
Trailer Ball and Ball Mount<sup>4</sup>  
TRD performance brake pads  
TRD performance air filter  
TRD performance oil filter  
TRD performance oil cap

TRD radiator cap  
Trailer ball & ball mount  
Universal tablet holder  
Wireless headphones<sup>22</sup>



All-weather cargo mat<sup>3</sup>



All-weather floor liners<sup>43</sup>



Carpet cargo mat<sup>3</sup>



Cargo cover<sup>3</sup>



Cargo net — envelope<sup>3</sup>



Doorsill protectors



Front skid plate



Paint protection film<sup>44</sup>

SPECIFICATIONS

**MECHANICAL AND PERFORMANCE**

|   | SR5       | TRD SPORT | LIMITED   | PLATINUM  |
|---|-----------|-----------|-----------|-----------|
| Engine  |           |           |           |           |
| 5.7-Liter i-FORCE V8 DOHC 32-Valve with Dual Independent Variable Valve Timing with intelligence (VVT-i); 381 hp @ 5600 rpm; 401 lb.-ft. @ 3600 rpm                             | Standard  | Standard  | Standard  | Standard  |
| 5.7-Liter i-FORCE V8 DOHC E85 Flex Fuel <sup>††</sup> 32-Valve with Dual Independent Variable Valve Timing with intelligence (VVT-i); 381 hp @ 5600 rpm; 401 lb.-ft. @ 3600 rpm | Available | Available | Available | Available |

**EMISSION RATING**

|   |          |          |          |          |
|---|----------|----------|----------|----------|
| Ultra Low Emission Vehicle II (ULEV-II) | Standard | Standard | Standard | Standard |
|---|----------|----------|----------|----------|

**TRANSMISSION**

|  |          |          |          |          |
|--|----------|----------|----------|----------|
| 6-speed Electronically Controlled automatic Transmission with intelligence (ECT-i); sequential shift mode and uphill/downhill shift logic; TOW/HAUL Mode | Standard | Standard | Standard | Standard |
|--|----------|----------|----------|----------|

**DRIVETRAIN**

|   |           |           |           |           |
|---|-----------|-----------|-----------|-----------|
| Rear-Wheel Drive  | Standard  | Standard  | Standard  | Standard  |
| Multi-Mode 4WD with Torsen <sup>®†</sup> limited-slip center differential with locking feature (4x4 only) | Available | Available | Available | Available |

**BODY CONSTRUCTION**

|                                       |          |          |          |          |
|---------------------------------------|----------|----------|----------|----------|
| Reinforced body-on-frame construction | Standard | Standard | Standard | Standard |
|---------------------------------------|----------|----------|----------|----------|

**SUSPENSION**

|  |          |    |          |    |
|--|----------|----|----------|----|
| Front high-mounted coil-spring independent double-wishbone front suspension with low-pressure gas-filled shock absorbers and hollow stabilizer bar; rear coil-spring independent double-wishbone suspension with low-pressure gas-filled shock absorbers and hollow stabilizer bar | Standard | NA | Standard | NA |
|--|----------|----|----------|----|

|  |    |          |    |    |
|--|----|----------|----|----|
| Front high-mounted coil-spring independent double-wishbone front suspension with TRD Sport performance-tuned Bilstein <sup>®</sup> shock absorbers, and TRD Sport performance-tuned anti-sway bar; rear coil-spring independent double-wishbone suspension with TRD Sport performance-tuned Bilstein <sup>®</sup> shock absorbers, and TRD Sport performance-tuned anti-sway bar | NA | Standard | NA | NA |
|--|----|----------|----|----|

|   |    |    |    |          |
|---|----|----|----|----------|
| Front high-mounted coil-spring independent double-wishbone front suspension with low-pressure gas-filled electronically actuated shock absorbers and hollow stabilizer bar; rear pneumatic cylinder height-controlled independent double-wishbone suspension with low-pressure gas-filled electronically actuated shock absorbers and hollow stabilizer bar | NA | NA | NA | Standard |
|---|----|----|----|----------|

|  |    |    |    |          |
|--|----|----|----|----------|
| Electronic Modulated Rear Air Suspension | NA | NA | NA | Standard |
|--|----|----|----|----------|

|  |    |    |    |          |
|--|----|----|----|----------|
| Adaptive Variable Suspension (AVS) system (which controls the damping force of the shock absorbers for all four wheels in accordance with driving and road surface conditions) | NA | NA | NA | Standard |
|--|----|----|----|----------|

**STEERING**

|   |          |          |          |          |
|---|----------|----------|----------|----------|
| Engine speed-sensing Variable Flow Control (VFC) power-assisted rack-and-pinion | Standard | Standard | Standard | Standard |
|---|----------|----------|----------|----------|

|   |      |      |      |      |
|---|------|------|------|------|
| Turning circle diameter, curb to curb (ft.) | 38.1 | 38.1 | 38.1 | 38.1 |
|---|------|------|------|------|

**BRAKES**

|   |          |          |          |          |
|---|----------|----------|----------|----------|
| Power-assisted 4-wheel Anti-lock Brake System (ABS) with Electronic Brake-force Distribution (EBD) and Brake Assist (BA) <sup>2</sup> | Standard | Standard | Standard | Standard |
|---|----------|----------|----------|----------|

**EXTERIOR DIMENSIONS (in.)**

|                             |                 |                 |                 |                 |
|-----------------------------|-----------------|-----------------|-----------------|-----------------|
| Overall width/height/length | 79.9/77.0/205.1 | 79.9/77.0/205.1 | 79.9/77.0/205.1 | 79.9/77.0/205.1 |
|-----------------------------|-----------------|-----------------|-----------------|-----------------|

|           |       |       |       |       |
|-----------|-------|-------|-------|-------|
| Wheelbase | 122.0 | 122.0 | 122.0 | 122.0 |
|-----------|-------|-------|-------|-------|

|                    |           |           |           |           |
|--------------------|-----------|-----------|-----------|-----------|
| Track (front/rear) | 67.9/69.1 | 67.9/69.1 | 67.9/69.1 | 67.9/69.1 |
|--------------------|-----------|-----------|-----------|-----------|

**INTERIOR DIMENSIONS (front/second-row/third-row seats) (in.)**

|                         |                |                |                |                |
|-------------------------|----------------|----------------|----------------|----------------|
| Head room with moonroof | 34.8/34.9/34.5 | 34.8/34.9/34.5 | 34.8/34.9/34.5 | 34.8/34.9/34.5 |
|-------------------------|----------------|----------------|----------------|----------------|

|               |                |                |                |                |
|---------------|----------------|----------------|----------------|----------------|
| Shoulder room | 66.4/65.6/65.7 | 66.4/65.6/65.7 | 66.4/65.6/65.7 | 66.4/65.6/65.7 |
|---------------|----------------|----------------|----------------|----------------|

|          |                |                |                |                |
|----------|----------------|----------------|----------------|----------------|
| Hip room | 62.5/59.9/50.4 | 62.5/59.9/50.4 | 62.5/59.9/50.4 | 62.5/59.9/50.4 |
|----------|----------------|----------------|----------------|----------------|

|          |                |                |                |                |
|----------|----------------|----------------|----------------|----------------|
| Leg room | 42.5/40.9/35.3 | 42.5/40.9/35.3 | 42.5/40.9/35.3 | 42.5/40.9/35.3 |
|----------|----------------|----------------|----------------|----------------|

See numbered footnotes in Disclosures section.

SPECIFICATIONS (continued)

| <b>OFF-HIGHWAY</b>  | <b>SR5</b>         | <b>TRD SPORT</b>   | <b>LIMITED</b>     | <b>PLATINUM</b>    |
|---|--------------------|--------------------|--------------------|--------------------|
| Approach/departure angle (degrees) (4x2; 4x4)                                 | 27/20; 27/21       | 27/20; 27/21       | 27/20; 27/21       | 27/20; 27/21       |
| Ground clearance (in.) (4x2/4x4)  | 9.9/10.0           | 9.9/10.0           | 9.9/10.0           | 9.6/9.6            |
| <b>WEIGHTS AND CAPACITIES</b>   |                    |                    |                    |                    |
| Curb Weight (lb.) (4x2/4x4)   | 5730/5985          | 5730/5985          | 5730/5985          | 5750/6000          |
| Gross Vehicle Weight Rating (GVWR) (lb.) (4x2/4x4)                            | 7100/7300          | 7100/7300          | 7100/7300          | 7100/7300          |
| Gross Combined Weight Rating (GCWR) (lb.) (4x2/4x4)                           | 13,600/13,600      | 13,600/13,600      | 13,600/13,500      | 13,400/13,500      |
| Cargo volume <sup>3</sup> (cu. ft.) (behind front/second-row/third-row seats) | 120.1/66.6/18.9    | 120.1/66.6/18.9    | 120.1/66.6/18.9    | 120.1/66.6/18.9    |
| Seating capacity (standard/available)   | 8                  | 8                  | 8/7                | 7/NA               |
| Fuel tank (gal.)  | 26.4               | 26.4               | 26.4               | 26.4               |
| <b>TOWING (SAE J2807 towing rating-compliant)<sup>4</sup></b>                 |                    |                    |                    |                    |
| Towing hitch receiver and wiring harness with 4/7-pin connector               | Standard           | Standard           | Standard           | Standard           |
| Towing capacity (lb.) (4x2/4x4)   | 7400/7100          | 7400/7100          | 7400/7100          | 7200/7000          |
| <b>TIRES</b>  |                    |                    |                    |                    |
| Type – Mud-and-Snow-rated radials   | Standard           | Standard           | Standard           | Standard           |
| Spare – Full-size, mounted under body   | Standard           | Standard           | Standard           | Standard           |
| P275/65R18 114T   | Standard           | NA                 | NA                 | NA                 |
| P275/55R20 111H   | NA                 | Standard           | Standard           | Standard           |
| <b>MILEAGE ESTIMATES (mpg city/highway/combined)<sup>5</sup></b>              |                    |                    |                    |                    |
|   | 13/18/15; 13/17/14 | 13/18/15; 13/17/14 | 13/18/15; 13/17/14 | 13/18/15; 13/17/14 |

FEATURES<sup>6</sup>

| <b>EXTERIOR</b>  | <b>SR5</b> | <b>TRD SPORT</b> | <b>LIMITED</b> | <b>PLATINUM</b> |   | <b>SR5</b> | <b>TRD SPORT</b> | <b>LIMITED</b> | <b>PLATINUM</b> |
|--|------------|------------------|----------------|-----------------|---|------------|------------------|----------------|-----------------|
| LED low- and high-beam headlights with auto on/off feature   | S          | S                | S              | S               | 20-in. machined-finish split-spoke with silver accent alloy wheels with P275/55R20 111H tires | –          | –                | –              | S               |
| LED Daytime Running Lights (DRL) with auto on/off feature  | S          | S                | S              | S               | Washer-linked variable intermittent windshield wipers and intermittent rear wiper             | S          | S                | S              | S               |
| Integrated LED fog lights with dark-silver surround  | S          | –                | –              | –               | One-touch 3-blink turn signal indicators  | S          | S                | S              | S               |
| Integrated LED fog lights with chrome surround   | –          | S                | S              | S               | Windshield wiper de-icer  | S          | S                | S              | S               |
| Chrome grille surround with dark-silver insert and accent  | S          | –                | S              | –               | Privacy glass on rear side, quarter and liftgate windows                                      | S          | S                | S              | S               |
| Chrome grille surround with gloss-black insert and accent  | –          | S                | –              | –               | Power liftgate with jam protection  | –          | –                | S              | S               |
| Chrome grille surround with chrome insert and accent   | –          | –                | –              | S               | Darkened rear taillight bezel   | S          | S                | S              | S               |
| Lower bumper opening with dark-silver surround   | S          | –                | –              | –               | Chrome raised Sequoia logo in color-keyed surround on liftgate                                | S          | –                | –              | –               |
| Lower bumper opening with chrome surround  | –          | S                | S              | S               | Chrome raised Sequoia logo with gloss-black base in color-keyed surround on liftgate          | –          | S                | –              | –               |
| Color-keyed heated power outside mirrors   | S          | –                | –              | –               | Dark-silver embossed Sequoia logo with chrome surround on liftgate                            | –          | –                | S              | S               |
| Gloss-black heated power outside mirrors   | –          | S                | –              | –               | Color-keyed rear spoiler with LED center high-mount stop light                                | S          | S                | S              | S               |
| Chrome auto-dimming heated power outside mirrors with power folding feature and turn signal indicators   | –          | –                | S              | –               | Chrome body side molding  | –          | –                | S              | S               |
| Chrome auto-dimming heated power outside mirrors with power folding, reverse tilt-down and memory features, turn signal indicators and puddle lights | –          | –                | –              | S               | Roof rack – silver color  | S          | –                | S              | S               |
| Color-keyed door handles   | S          | S                | –              | –               | Roof rack – black color   | –          | S                | –              | –               |
| Chrome door handles  | –          | –                | S              | S               | Running boards – black  | S          | S                | –              | –               |
| Satin-black TRD Sport front door logos   | –          | S                | –              | –               | Running boards – black with color-keyed surround  | –          | –                | S              | S               |
| Power tilt/slide moonroof with sliding sunshade  | S          | S                | S              | S               | Engine and transfer case skid plates (transfer case 4x4 only)                                 | S          | S                | S              | S               |
| 18-in. 5-spoke alloy wheels with P275/65R18 114T tires   | S          | –                | –              | –               | Adaptive Variable Suspension  | –          | –                | –              | S               |
| 20-in. TRD Sport black alloy wheels with P275/55R20 111H tires   | –          | S                | –              | –               | Electronically Modulated Rear Air Suspension  | –          | –                | –              | S               |
| 20-in. machined-finish split-spoke with dark-silver accent alloy wheels with P275/55R20 111H tires   | –          | –                | S              | –               | TRD Sport performance-tuned Bilstein® front and rear shock absorbers                          | –          | S                | –              | –               |
|  |            |                  |                |                 | TRD Sport performance-tuned front and rear anti-sway bars                                     | –          | S                | –              | –               |

See numbered footnotes in Disclosures section.

**S = Standard**    **O = Optional**    **– = Not Available**    **P = Feature is available as part of an option package.**

FEATURES<sup>5</sup> (continued)

| INTERIOR  | SR5 | TRD SPORT | LIMITED | PLATINUM |   | SR5 | TRD SPORT | LIMITED | PLATINUM |
|---|-----|-----------|---------|----------|---|-----|-----------|---------|----------|
| Automatic three-zone front and rear climate control with air filter   | S   | S         | S       | S        | 7-passenger seating with leather trim and second-row captain's chairs   | —   | —         | O       | —        |
| Entune™ Multimedia Bundle <sup>7</sup> — includes AM/FM CD player with MP3/WMA playback capability, touch-screen display, auxiliary audio jack, USB 2.0 port <sup>8</sup> with increased charging capability and iPod <sup>9</sup> connectivity and control, hands-free phone capability, phone book access and music streaming <sup>10</sup> via Bluetooth <sup>11</sup> wireless technology, and voice recognition <sup>12</sup> (integrated backup camera <sup>13</sup> vehicle dependent). Entune® App Suite <sup>14</sup> includes Destination Search, iHeartRadio, MovieTickets.com, OpenTable®, Pandora, <sup>15</sup> Yelp, <sup>9</sup> Facebook Places and Slacker Radio; Siri® Eyes Free <sup>16</sup> and real-time info including traffic, weather, fuel prices, sports and stocks                                   | S   | S         | S       | S        | 7-passenger seating with perforated leather-trimmed and heated second-row captain's chairs and multi-function center console  | —   | —         | —       | S        |
| Entune™ Audio Plus with Connected Navigation App <sup>17</sup> — includes the Entune™ Multimedia Bundle <sup>7</sup> 6.1-in. high-resolution touch-screen display, AM/FM CD player, auxiliary audio jack, USB 2.0 port <sup>8</sup> with iPod <sup>9</sup> connectivity and control, advanced voice recognition, <sup>12</sup> hands-free phone capability, phone book access and music streaming <sup>10</sup> via Bluetooth <sup>11</sup> wireless technology, Connected Navigation Scout® GPS Link App, <sup>17</sup> Siri® Eyes Free, <sup>16</sup> SiriusXM® Satellite Radio <sup>18</sup> with 3-month complimentary SiriusXM All Access trial, <sup>19</sup> HD Radio™ <sup>20</sup> Technology, HD Radio™ Traffic and Weather in major metro areas and integrated backup camera <sup>13</sup> display with projected path | S   | S         | —       | —        | Easy-clean fabric-trimmed 40/20/40 split, sliding, reclining, fold-flat second-row seat with one-touch access to third-row seat   | S   | S         | —       | —        |
| Entune™ Premium Audio with Integrated Navigation <sup>21</sup> and App Suite <sup>14</sup> — includes 6.1-in. high-resolution touch-screen display with Entune® App Suite. Entune® App Suite includes: Destination Search, iHeartRadio, MovieTickets.com, OpenTable®, Pandora, <sup>15</sup> Yelp® Facebook Places and Slacker Radio; real-time info including traffic, weather, fuel prices, sports and stocks   | P   | P         | S       | —        | Leather-trimmed 40/20/40 split, sliding, reclining, fold-flat second-row seat with one-touch access to third-row seat   | P   | P         | S       | —        |
| Entune™ Premium JBL Synthesis® audio with Integrated Navigation <sup>21</sup> and App Suite <sup>14</sup> — includes high-resolution 6.1-in. touch-screen with split-screen display and all the features of Entune™ Premium Audio and Entune® App Suite, plus 14 JBL® speakers including subwoofer and amplifier  | —   | —         | P       | S        | Perforated leather-trimmed second-row heated captain's chairs with multi function center console  | —   | —         | —       | S        |
| Multi-Information Display with outside temperature, compass, instant/average fuel economy and distance to empty   | S   | S         | S       | S        | Easy-clean fabric-trimmed 60/40 split, reclining, fold-flat third-row seat with folding headrests   | S   | S         | —       | —        |
| Rear-seat Blu-ray Disc™ player with 9-inch display, two wireless headphones, <sup>22</sup> wireless remote and rear audio system with 120V AC power outlet and RCA jacks  | —   | —         | O       | S        | Leather-trimmed power 60/40 split, power reclining, fold-flat third-row seat with folding headrests   | P   | P         | S       | —        |
| Easy-clean fabric-trimmed front seats; 8-way power-adjustable driver's seat; 4-way adjustable front passenger seat  | S   | S         | —       | —        | Perforated leather-trimmed power 60/40 split, power reclining, fold-flat third-row seat with folding headrests  | —   | —         | —       | S        |
| Leather-trimmed and heated front seats; 10-way power-adjustable driver's seat; 4-way power-adjustable front passenger seat  | P   | P         | S       | —        | Leather-trimmed tilt/telescopic steering wheel with audio, Siri® Eyes Free <sup>16</sup> and Bluetooth <sup>11</sup> hands-free phone controls  | S   | S         | S       | —        |
| Perforated leather-trimmed heated and ventilated front seats; 10-way power-adjustable driver's seat with power thigh and lumbar support; 4-way power-adjustable front passenger seat  | —   | —         | —       | S        | Leather-trimmed power tilt/telescopic steering wheel, wood-grain-style accents, memory, audio, Siri® Eyes Free <sup>16</sup> and Bluetooth <sup>11</sup> hands-free phone controls              | —   | —         | —       | S        |
| 8-passenger seating with easy-clean fabric  | S   | —         | —       | —        | Multi-function remote keyless entry system with remote illuminated entry  | S   | S         | S       | S        |
| 8-passenger seating with leather trim   | P   | —         | S       | —        | Power windows with driver and front passenger one-touch auto up/down and jam protection   | S   | S         | S       | S        |
| 7-passenger seating with easy-clean fabric and second-row captain's chairs  | —   | S         | —       | —        | Power rear window with auto up/down, jam protection and defogger  | S   | S         | S       | S        |
| 7-passenger seating with black leather trim and second-row captain's chairs   | —   | P         | —       | —        | Second- and third-row retractable window sunshades  | —   | —         | S       | S        |
|   |     |           |         |          | Power door locks with shift-linked automatic lock/unlock feature  | S   | S         | S       | S        |
|   |     |           |         |          | Auto-dimming rearview mirror with compass and HomeLink <sup>23</sup> universal transceiver  | P   | P         | S       | S        |
|   |     |           |         |          | Overhead console with storage and maplights   | S   | S         | S       | S        |
|   |     |           |         |          | Multi-function center console with two front and two rear cup holders, three 12V auxiliary power outlets, sliding covered armrest and storage compartment                                       | S   | S         | —       | —        |
|   |     |           |         |          | Multi-function center console with two front and two rear cup holders, two 12V auxiliary power outlets, one 120V AC power outlet, RCA jacks and sliding covered armrest and storage compartment | —   | —         | O       | S        |
|   |     |           |         |          | Front cup holders with chrome trim in center console  | —   | —         | S       | S        |
|   |     |           |         |          | Cargo area 12V auxiliary power outlet and grocery bag hooks   | S   | S         | S       | S        |
|   |     |           |         |          | Dual extendable sun visors with vanity mirrors  | S   | S         | —       | —        |
|   |     |           |         |          | Dual extendable sun visors with illuminated vanity mirrors and secondary visors   | —   | —         | S       | S        |
|   |     |           |         |          | 16 (18 on Platinum) cup and bottle holders (total)  | S   | S         | S       | S        |

See numbered footnotes in Disclosures section.

S = Standard      O = Optional      — = Not Available      P = Feature is available as part of an option package.

**SAFETY AND CONVENIENCE**

|   | SR5 | TRD SPORT | LIMITED | PLATINUM |  | SR5 | TRD SPORT | LIMITED | PLATINUM |
|---|-----|-----------|---------|----------|--|-----|-----------|---------|----------|
| Toyota Safety Sense™ P (TSS-P) <sup>24</sup> — includes Pre-Collision System <sup>25</sup> with Pedestrian Detection <sup>26</sup> , Lane Departure Alert (LDA) <sup>27</sup> with Sway Warning System (SWS) <sup>28</sup> , Automatic High Beams (AHB) <sup>29</sup> and Dynamic Radar Cruise Control (DRCC) <sup>30</sup>   | S   | S         | S       | S        | Retractor (ELR) and Automatic/Emergency Locking Retractor (ALR/ELR) on all passenger belts   | S   | S         | S       | S        |
| <b>STAR SAFETY SYSTEM</b> ™ Star Safety System™ — includes Vehicle Stability Control (VSC) <sup>31</sup> , Traction Control (TRAC), Anti-lock Brake System (ABS), Electronic Brake-force Distribution (EBD), Brake Assist (BA) <sup>2</sup> and Smart Stop Technology <sup>®</sup> (SST) <sup>32</sup> . At speeds greater than five miles per hour, when the accelerator is depressed first and the brakes are then applied firmly for longer than one-half second, Smart Stop Technology <sup>®</sup> is designed to help the driver bring the vehicle to a stop. | S   | S         | S       | S        | Driver and front passenger seatbelt pretensioners with force limiters  | S   | S         | S       | S        |
| Driver and front passenger Advanced Airbag System <sup>33</sup>   | S   | S         | S       | S        | LATCH (Lower Anchors and Tethers for CHildren) includes lower anchors on all second-row seats and tether anchors on all second-row seats and center third-row seat | S   | S         | S       | S        |
| Driver and front passenger seat-mounted side airbags, driver and front passenger knee airbags and all-row side curtain airbags <sup>33</sup>  | S   | S         | S       | S        | Child-protector rear door locks and power window lockout   | S   | S         | S       | S        |
| Driver and front passenger seat-mounted side airbags, driver and front passenger knee airbags, and all-row Roll-sensing Side Curtain Airbags (RSCA) <sup>33</sup> (4x4 models only)   | S   | S         | S       | S        | Front energy-absorbing crumple zone  | S   | S         | S       | S        |
| Driver and front passenger seatbelt warning sensor  | S   | S         | S       | S        | Side-impact door beams   | S   | S         | S       | S        |
| 3-point seatbelts for all seating positions; driver-side Emergency Locking  | S   | S         | S       | S        | Energy-dissipating interior trim   | S   | S         | S       | S        |

**PACKAGES**

|   | SR5 | TRD SPORT | LIMITED | PLATINUM |
|---|-----|-----------|---------|----------|
| Premium Package — includes 8-passenger leather-trimmed seats; heated 10-way power-adjustable driver's seat and 4-way power-adjustable front passenger seat; power reclining and fold-flat third-row seating; Entune™ Premium Audio with Integrated Navigation <sup>21</sup> and App Suite <sup>14</sup> ; auto-dimming rearview mirror with compass and HomeLink <sup>®23</sup> universal transceiver   | P   | —         | —       | —        |
| TRD Sport Premium Package — includes 7-passenger Black leather-trimmed seats with contrast stitching; heated 10-way power-adjustable driver's seat and 4-way power-adjustable front passenger seat; power reclining and fold-flat third-row seating; Entune™ Premium Audio with Integrated Navigation <sup>21</sup> and App Suite <sup>14</sup> ; auto-dimming rearview mirror with compass and HomeLink <sup>®23</sup> universal transceiver | —   | P         | —       | —        |
| Entune™ Premium JBL® Audio and Convenience Package — includes Entune™ Premium JBL Synthesis® audio with Integrated Navigation <sup>21</sup> and App Suite <sup>14</sup> ; two-position power memory driver's seat and memory outside mirrors  | —   | —         | P       | S        |

**OPTIONS**

|  | SR5 | TRD SPORT | LIMITED | PLATINUM |
|--|-----|-----------|---------|----------|
| Entune™ Premium JBL Synthesis® audio with Integrated Navigation <sup>21</sup> and App Suite <sup>14</sup> includes Entune™ Premium Audio and App Suite plus 14 JBL® speakers including subwoofer and amplifier | —   | —         | O       | S        |
| 7-passenger seating with leather trim and second-row captain's chairs  | —   | P         | O       | S        |
| Rear-seat Blu-ray Disc™ player with 9-in. display, two wireless headphones, <sup>22</sup> wireless remote and rear audio system with 120V AC power outlet and RCA jacks  | —   | —         | O       | S        |

For more information about our available audio systems, as well as Bluetooth<sup>®11</sup>-compatible features, please contact your local Toyota dealer.

See numbered footnotes in Disclosures section.

S = Standard    O = Optional    — = Not Available    P = Feature is available as part of an option package.

## DISCLOSURES

**1.** Torsen® is a registered trademark of Zexel Torsen, Inc. **2.** Brake Assist is designed to help the driver take full advantage of the benefits of ABS. It is not a substitute for safe driving practices. Braking effectiveness also depends on proper vehicle maintenance, and tire and road conditions. See *Owner's Manual* for additional limitations and details. **3.** Cargo and load capacity limited by weight and distribution. **4.** Before towing, confirm your vehicle and trailer are compatible, hooked up and loaded properly and that you have any necessary additional equipment. Do not exceed any Weight Ratings and follow all instructions in your *Owner's Manual*. The maximum you can tow depends on base curb weight plus the total weight of any cargo, occupants, and added vehicle equipment. "Added vehicle equipment" includes additional standard/optional equipment and accessories added by the manufacturer, dealers, and/or vehicle owners. The only way to be certain of your vehicle's exact curb weight is to weigh your vehicle without passengers or cargo. **5.** 2018 EPA-estimated mileage. Actual mileage will vary. **6.** Toyota strives to build vehicles to match customer interest and thus they typically are built with popular options and option packages. Not all options/packages are available separately and some may not be available in all regions of the country. If you would prefer a vehicle with no or different options, contact your dealer to check for current availability or the possibility of placing a special order. **7.** Entune™ is a trademark of Toyota Motor Corporation. Always drive safely, obey traffic laws and focus on the road while driving. Services vary by phone/carrier. Functionality depends on many factors. Services subject to change. For enrollment and more details, see [toyota.com/entune](http://toyota.com/entune). **8.** May not be compatible with all mobile phones, MP3/WMA players and like models. **9.** iPod® and iPhone® are registered trademarks of Apple Inc. All rights reserved. **10.** Apps/services vary by phone/carrier; functionality depends on many factors. Select apps use large amounts of data; you are responsible for charges. Apps and services subject to change. See [toyota.com/entune](http://toyota.com/entune) for details. **11.** The Bluetooth® word mark and logos are registered trademarks owned by Bluetooth SIG, Inc., and any use of such marks by Toyota is under license. A compatible Bluetooth®-enabled phone must first be paired. Phone performance depends on software, coverage and carrier. **12.** Advanced voice recognition capabilities vary by head unit. **13.** The backup camera does not provide a comprehensive view of the rear area of the vehicle. You should also look around outside your vehicle and use your mirrors to confirm rearward clearance. Environmental conditions may limit effectiveness and view may become obscured. See *Owner's Manual* for additional limitations and details. **14.** Be sure to obey traffic regulations and maintain awareness of road and traffic conditions at all times. Apps/services vary by phone/carrier; functionality depends on many factors. Select apps use large amounts of data; you are responsible for charges. Apps and services subject to change. See [toyota.com/entune](http://toyota.com/entune) for details. **15.** PANDORA®, the PANDORA® logo, and the Pandora trade dress are trademarks or registered trademarks of Pandora Media, Inc., used with permission. **16.** Always drive safely, obey traffic laws and focus on the road while driving. Siri® is available on select iPhone®/iPad® models and requires Internet access. Siri® is not available in all languages or all areas and features vary by area. Some Siri® functionality and commands are not accessible in the vehicle. Data charges may apply. See [apple.com](http://apple.com) and phone carrier for details. Siri® is a registered trademark of Apple Inc. **17.** Be sure to obey traffic regulations and maintain awareness of road and traffic conditions at all times. Apps/services vary by phone/carrier; functionality depends on many factors. Select apps use large amounts of data; you are responsible for charges. Apps and services subject to change. Availability and accuracy of the information provided by Scout® GPS Link is dependent upon many factors. Use common sense when relying on information provided. Services and programming subject to change. Services not available in every city or roadway. See [toyota.com/entune](http://toyota.com/entune) for details. Scout® is a registered trademark of Telenav, Inc. **18.** SiriusXM audio services require a subscription sold separately, or as a package, by Sirius XM Radio Inc. If you decide to continue service after your trial, the subscription plan you choose will automatically renew thereafter and you will be charged according to your chosen payment method at then-current rates. Fees and taxes apply. To cancel you must call SiriusXM at 1-866-635-2349. See SiriusXM Customer Agreement for complete terms at [www.siriusxm.com](http://www.siriusxm.com). All fees and programming subject to change. Not all vehicles or devices are capable of receiving all services offered by SiriusXM. Current information and features may not be available in all locations, or on all receivers. ©2017 Sirius XM Radio Inc. Sirius, XM, SiriusXM and all related marks and logos are trademarks of Sirius XM Radio Inc. **19.** Trial length and service availability may vary by model, model year or trim. **20.** HD Radio™ Technology manufactured under license from iBiquity Digital Corporation U.S. and Foreign Patents. HD Radio™ and the HD, HD Radio, and "Arc" logos are proprietary trademarks of iBiquity Digital Corp. **21.** Availability and accuracy of the information provided by the navigation system is dependent upon many factors. Use common sense when relying on information provided. Services and programming subject to change. Updates may be available from your dealer at an additional cost. See *Owner's Manual* for details. **22.** Headphones are for passenger use only. Do not use while driving vehicle. **23.** HomeLink® and the HomeLink® house icon are registered trademarks of Gentex Corporation. **24.** Drivers are responsible for their own safe driving. Always pay attention to your surroundings and drive safely. Depending on the conditions of roads, weather and the vehicle, the system(s) may not work as intended. See *Owner's Manual* for additional limitations and details. **25.** The TSS Pre-Collision System is designed to help avoid or reduce the crash speed and damage in certain frontal collisions only. It is not a substitute for safe and attentive driving. System effectiveness is dependent on road, weather and vehicle conditions. See *Owner's Manual* for additional limitations and details. **26.** The Pedestrian Detection system is designed to detect a pedestrian ahead of the vehicle, determine if impact is imminent and help reduce impact speed. It is not a substitute for safe and attentive driving. System effectiveness depends on many factors, such as speed, size and position of pedestrians, and weather, light and road conditions. See *Owner's Manual* for additional limitations and details. **27.** Lane Departure Alert is designed to read visible lane markers under certain conditions, and provide visual and audible alerts when lane departure is detected. It is not a collision-avoidance system or a substitute for safe and attentive driving. Effectiveness is dependent on road, weather and vehicle conditions. See *Owner's Manual* for additional limitations and details. **28.** Sway Warning is designed to provide a visual and audible alert if it detects a pattern of vehicle movement that might indicate driver inattention or drowsiness. It is not a collision-avoidance system or a substitute for safe and attentive driving. Effectiveness is dependent on road, weather and vehicle conditions. See *Owner's Manual* for additional limitations and details. **29.** Automatic High Beams operate at speeds above 19 mph. Factors such as a dirty windshield, weather, lighting and terrain limit effectiveness, requiring the driver to manually operate the high beams. See *Owner's Manual* for additional limitations and details. **30.** Dynamic Radar Cruise Control is designed to assist the driver and is not a substitute for safe and attentive driving practices. System effectiveness is dependent on road, weather and traffic conditions. See *Owner's Manual* for additional limitations and details. **31.** Vehicle Stability Control is an electronic system designed to help the driver maintain vehicle control under adverse conditions. It is not a substitute for safe and attentive driving practices. Factors including speed, road conditions, weather and driver steering input can all affect whether VSC will be effective in preventing a loss of control. See *Owner's Manual* for additional limitations and details. **32.** Smart Stop Technology® operates only in the event of certain contemporaneous brake and accelerator pedal applications. When engaged, the system will reduce power to help the brakes bring the vehicle to a stop. Factors including speed, road conditions and driver input can all impact stopping distance. Smart Stop Technology® is not a substitute for safe and attentive driving and does not guarantee instant stopping. See *Owner's Manual* for details. **33.** All the airbag systems are Supplemental Restraint Systems. All airbags (if installed) are designed to inflate only under certain conditions and in certain types of severe collisions. To decrease the risk of injury from an inflating airbag, always wear seatbelts and sit upright in the middle of the seat as far back as possible. Do not put objects in front of an airbag or around the seatback. Do not use a rearward-facing child seat in any front passenger seat. See *Owner's Manual* for further information/warnings. **34.** Do not rely exclusively on the Blind Spot Monitor. Always look over your shoulder and use your turn signal. There are limitations to the function, detection and range of the monitor. See *Owner's Manual* for additional limitations and details. **35.** Do not rely exclusively on the Rear Cross-Traffic Alert system. Always look over your shoulder and use your mirrors to confirm rear clearance. There are limitations to the function, detection and range of the system. See *Owner's Manual* for additional limitations and details. **36.** Do not exclusively rely on the parking assist sonar system. Always look over your shoulder and use your mirrors to confirm clearance. Certain vehicle and environmental conditions may affect the ability of the sensors to detect an object. Even the shape and composition of the object can be a factor. See *Owner's Manual* for additional limitations and details. **37.** Trailer-Sway Control (TSC) is an electronic system designed to help the driver maintain vehicle control under adverse conditions. It is not a substitute for safe driving practices. Factors including speed, road conditions, weather and driver steering input can all affect whether TSC will be effective in preventing a loss of control. See *Owner's Manual* for additional limitations and details. **38.** The engine immobilizer is a state-of-the-art anti-theft system. When you insert your key into the ignition switch or bring a Smart Key fob into the vehicle, the key transmits an electronic code to the vehicle. The engine will only start if the code in the transponder chip inside the key/fob matches the code in the vehicle's immobilizer. Because the transponder chip is embedded in the key/fob, it can be costly to replace. If you lose a key or fob, your Toyota dealer can help. Alternatively, you can find a qualified independent locksmith to perform high-security key services by consulting your local Yellow Pages or by contacting [www.aloa.org](http://www.aloa.org). **39.** Standard on Limited and Platinum. **40.** Extra-cost color. **41.** Flex Fuel Vehicles not available in every state. In states where available, all 4x4 5.7L V8 models are FFV. Flex Fuel Vehicles use E85, gasoline or a combination of both. Estimated mileage will vary. Consult your dealer for nearest E85 filling stations or see [toyota.com](http://toyota.com) for further details. **42.** Not available on Platinum models. **43.** This floor mat was designed specifically for use in your model and model year vehicle and SHOULD NOT be used in any other vehicle. To avoid potential interference with pedal operation, each mat must be secured with its fasteners. Do not install a floor mat on top of an existing floor mat. **44.** The Toyota Genuine Accessory Warranty will only apply when the installation is performed by a trained Toyota-approved installer. Please see dealer for details. **45.** Auto LSD is an electronic, brake-actuated limited-slip differential that automatically activates when VSC is disengaged at low speeds. **46.** Standard on SR5 and Limited. Not available on Platinum.

## CARS BUILT FOR THE WAY YOU LIVE

At Toyota, we build cars for how you live. From building advanced safety features designed to help prevent crashes to driving cross-country to understand how we can make your driving experience better, our work starts with understanding your needs. Building cars for how you live also means thinking about tomorrow — from fuel efficiency and environmental innovations, to things beyond cars, like a bicycle that you can control with your mind. And because what we learn building cars can help improve lives in other places, we do things like help communities rebuild their homes quickly after a disaster and work with soup kitchens to help them serve more people faster. Toyota. Built for how you live. Together we are going places.

## WARRANTIES

---

Every Toyota Car, Truck and SUV is built to exceptional standards. And that's not idle boasting. We back it up with these Limited Warranty Coverages:

**Basic:** 36 months/36,000 miles (all components other than normal wear and maintenance items).

**Powertrain:** 60 months/60,000 miles (engine, transmission/transaxle, drive system, seatbelts and airbags).

**Rust-Through:** 60 months/unlimited miles (corrosion perforation of sheet metal).

**Emissions:** Coverages vary under Federal and California regulations. Refer to applicable *Warranty and Maintenance Guide* for details.

**Accessories:** For Genuine Toyota Accessories purchased at the time of the new vehicle purchase, the Toyota Accessory Warranty coverage is in effect for 36 months/36,000 miles from the vehicle's in-service date, which is the same coverage as the Toyota New Vehicle Limited Warranty.

Toyota strives to build vehicles to match customer interest and thus they typically are built with popular options and option packages. Not all options/packages are available separately and some may not be available in all regions of the country. See [toyota.com](http://toyota.com) for information about options/packages commonly available in your area. If you would prefer a vehicle without any or with different options, contact your dealer to check for current availability or the possibility of placing a special order. Some vehicles are shown with available equipment. Seatbelts should be worn

For Genuine Toyota Accessories purchased after the new vehicle purchase the coverage is 12 months, regardless of mileage, from the date the accessory was installed on the vehicle, or the remainder of any applicable new vehicle warranty, whichever provides greater coverage.

You may be eligible for transportation assistance if it's necessary that your vehicle be kept overnight for repairs covered under warranty. Please see your authorized Toyota dealership for further details.

For complete details about Toyota's warranties, please visit [www.toyota.com](http://www.toyota.com), refer to the applicable *Warranty and Maintenance Guide* or see your Toyota dealer.

at all times. For details on vehicle specifications, standard features and available equipment in your area, contact your Toyota dealer. A vehicle with particular equipment may not be available at the dealership. Ask your Toyota dealer to help locate a specifically equipped vehicle.

All information presented herein is based on data available at the time of posting, is subject to change without notice and pertains specifically to mainland U.S.A. vehicles only. Prototypes shown. Actual production vehicles will vary.



For Toyota Mobility program details, go to [www.toyota.com/mobility](http://www.toyota.com/mobility) or call the Toyota Customer Assistance Center at 1-800-331-4331